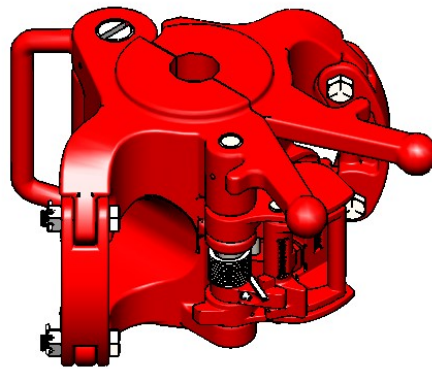
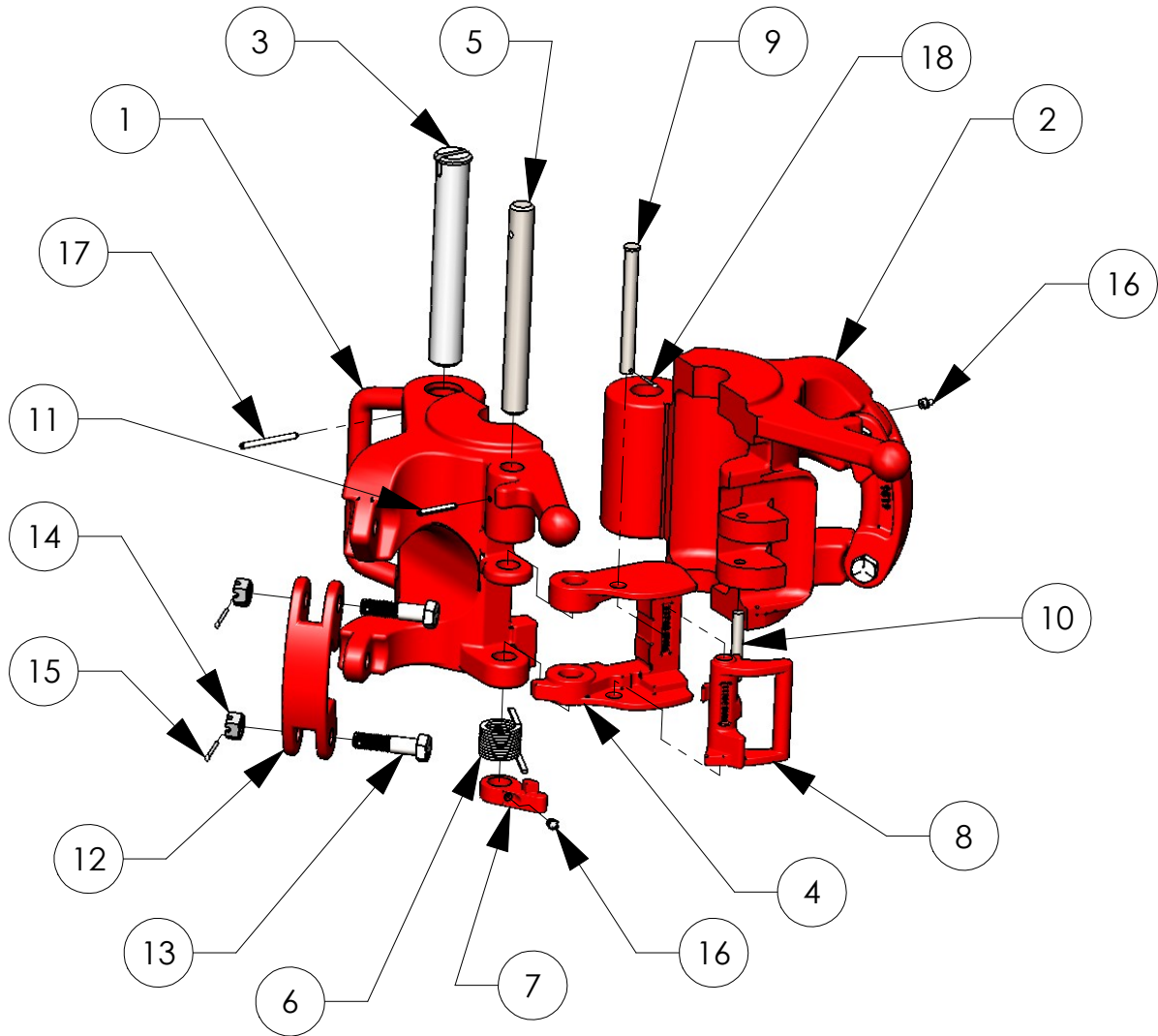


BVM RA / MAA / AA ELEVATOR

BVM's RA-125, RA-150, MAA-250, and AA-350 are high collar type center latch elevators for API drill pipe, casing and tubing. They range in size from 2 3/8" through 7". BVM elevators are made from alloy steel, heat treated, load tested and magnetic particulate inspected. All steel specifications are certified.



RA-150 SHOWN

BVM CORPORATION

430 S. NAVAJO STREET, DENVER CO 80223
PHONE: 303-975-1402; FAX: 303-975-0981
www.bvmcorp.com; sales@bvmcorp.com

BVM RA / MAA / AA ELEVATOR

API SIZE	TYPE OF STYLE	TYPE RA-125	TYPE RA-150	TYPE MAA-250	TYPE AA-350
		PART NO	PART NO	PART NO	PART NO
2 3/8"	For 2 3/8" NON UPSET Tubing	25462-158	25459-158	-	-
	For 2 3/8" UPSET Tubing	25462-159	25459-159	-	-
	For 2 3/8" I.U.D.P. having API Reg or FH Tool Joint	25462-109	25459-109	-	-
	For 2 3/8" E.U.D.P. having API IF Tool Joint	25462-115	25459-115	-	-
2 3/4"	For 2 3/4" Plain Drill Collar with Lift Plug	25462-203	25459-203	-	-
2 7/8"	For 2 7/8" NON UPSET Tubing	25462-160	25459-160	-	-
	For 2 7/8" UPSET Tubing	25462-161	25459-161	-	-
	For 2 7/8" I.U.D.P. having API Reg or FH Tool Joint	25462-108	25459-108	-	-
	For 2 7/8" E.U.D.P. having API IF Tool Joint	25462-101	25459-101	-	-
3	For 3" Plain Drill Collar with Lift Plug	25462-205	25459-205	-	-
3 1/8"	For 3 1/8" Plain Drill Collar with Lift Plug	25462-206	25459-206	-	-
3 1/4"	For 3 1/4" Plain Drill Collar with Lift Plug	25462-207	25459-207	-	-
3 1/2"	For 3 1/2" NON UPSET Tubing	25462-162	25459-162	13373-162	-
	For 3 1/2" UPSET Tubing	25462-163	25459-163	13373-163	-
	For 3 1/2" I.U.D.P. having API Reg, FH, or X Hole Tool Joint	25462-102	25459-102	13373-102	-
	For 3 1/2" E.U.D.P. having API IF Tool Joint	25462-103	25459-103	13373-103	-
	For 3 1/2" Drill Collars with Zip Lift Recess	25462-625	25459-625	13373-625	-
	For 3 1/2" Plain Drill Collar with Lift Plug	25462-209	25459-209	13373-209	-
3 3/4"	For 3 3/4" Plain Drill Collar with Lift Plug	-	25459-211	13373-211	-
4"	For 4" NON UPSET Tubing	-	25459-163	13373-163	-
	For 4" UPSET Tubing	-	25459-164	13373-164	-
	For 4" I.U.D.P. having API Reg, FH, or X Hole Tool Joint	-	25459-165	13373-165	-
	For 4" E.U.D.P. having API IF Tool Joint	-	25459-104	13373-104	-
	For 4" Plain Drill Collar with Lift Plug	-	25459-213	13373-213	-
4 1/8"	For 4 1/8" Drill Collars with Zip Lift Recess	-	25459-177	13373-177	-
	For 4 1/8" Plain Drill Collar with Lift Plug	-	25459-519	13373-519	-
4 1/4"	For 4 1/4" Plain Drill Collar with Lift Plug	-	25459-548	13373-548	-
4 1/2"	For 4 1/2" NON UPSET Tubing and 4 1/2" Casing	-	25459-105	13373-105	12942-105
	For 4 1/2" UPSET Tubing	-	25459-129	13373-129	12942-129
	For 4 1/2" I.U.D.P. having API Reg, FH, or X Hole Tool Joint	-	25459-167	13373-167	12942-167
	For 4 1/2" Plain Drill Collar with Lift Plug	-	25459-215	13373-215	12942-215
4 3/4"	For 4 3/4" Drill Collars with Zip Lift Recess	-	25459-435	13373-435	12942-435
	For 4 3/4" Plain Drill Collar with Lift Plug	-	-	13373-354	12942-354
5"	For 5" IEU Drill Pipe	-	-	13373-106	12942-106
	For 5" Casing	-	-	13373-131	12942-131
5 1/2"	For 5 1/2" IEU Drill Pipe	-	-	13373-107	12942-107
	For 5 1/2" Casing	-	-	13373-132	12942-132
	For 5 1/2" Drill Collar with Zip Lift Recess	-	-	13373-180	12942-180
6 5/8"	For 6 5/8" Casing	-	-	13373-135	12942-135
7"	For 7" Drill Collar with Zip Lift Recess	-	-	13373-361	12942-361
	For 7" Casing	-	-	13373-135	-

BVM RA / MAA / AA ELEVATOR

ITEM #	DESCRIPTION	QTY	RA 125 25462-**	RA 150 25459-**	MAA 250 13373-**	AA 350 12942-**
1	BODY	1	25462L	25459L	13373L	12942L
2	DOOR	1	25462R	25459R	13373R	12942R
3	HINGE PIN	1	525-3	12704-2^	13376-1	33998
4	LATCH	1	11111	11763	12945	31071
5	LATCH PIN	1	5389-2	5445-1	12980	33999
6	LATCH SPRING	1	25465	11766	12978	18416
7	LATCH CAM	1	11113-1	11581	12946	-
8	LATCH LOCK	1	11112	11764	12972	13152
9	LATCH LOCK PIN	1	11118	11759-1	13530	15101
10	DOOR LUG PIN	1	12529	12529	13531	13190
11	LATCH PIN RETAINER	1	40040-22-0	40040-16-0	40040-22-0	40050-32-0
12	LINK BLOCK	2	9519	9519	9519	9519
14	LINK BLOCK BOLT	4	8145	8145	8145	8145
15	LINK BLOCK NUT	4	6812C-00-5	6812C-00-5	6812C-00-5	6812C-00-5
16	COTTER PIN	4	30AB0-14-0	30AB0-14-0	30AB0-14-0	30AB0-14-0
17	GREASE FITTING	2	940308-1	940308-1	940308-1	940308-1
18	HINGE PIN RETAINER	1	40040-24-0	40040-24-0	40060-32-0	40060-40-0
19	LATCH LOCK PIN RETAINER	1	30020-08-0	30020-08-0	30020-08-0	-
20*	LATCH SPRING STOP	1	-	-	-	13185-1
21*	LATCH LOCK SPRING	1	-	-	-	13188

* = Item not shown in illustration

** = See Bore Code Charts

^ = Use P/N 12704-1 for S/N 32254 or lower