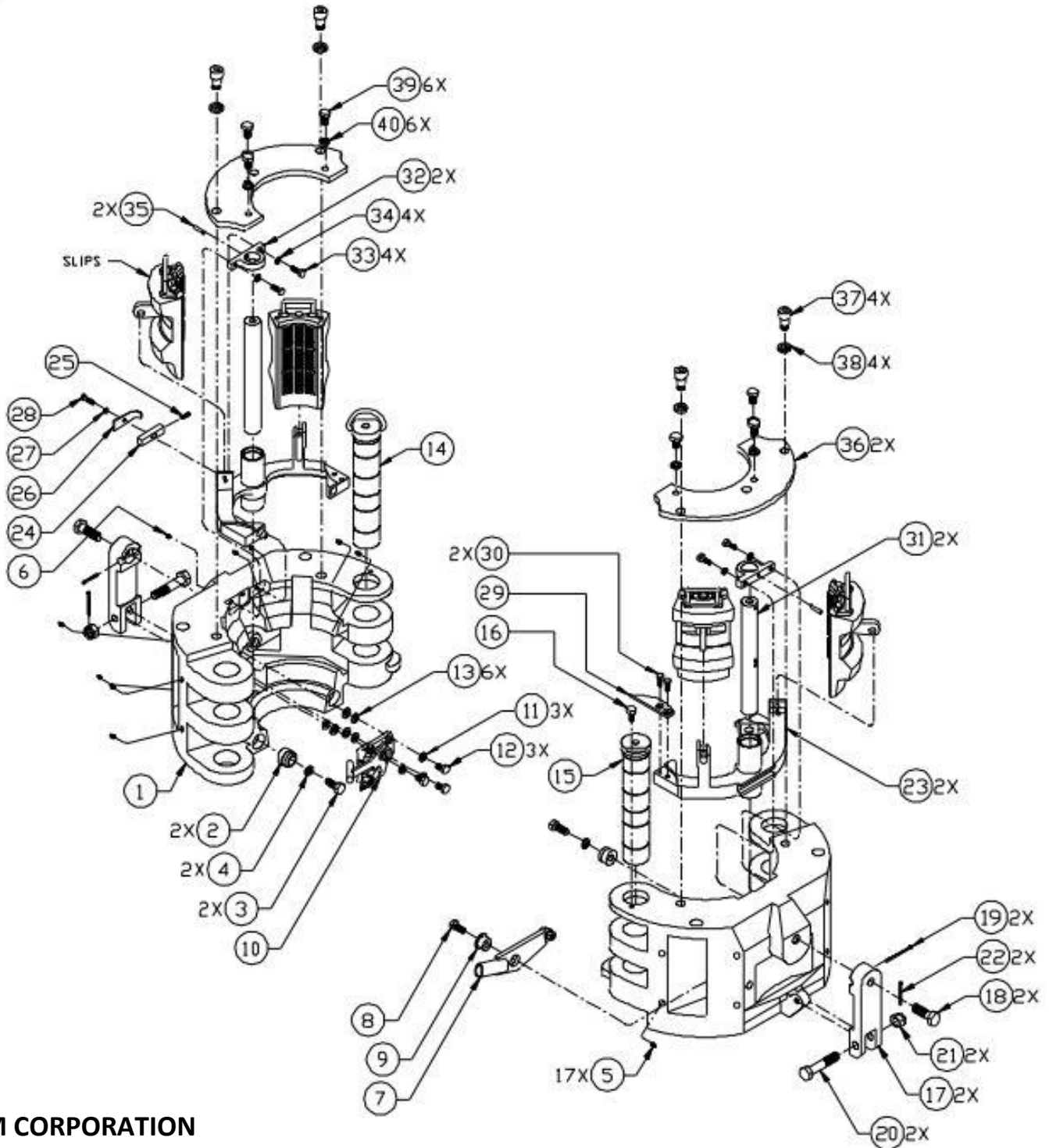


BVM 250 TON 7-5/8" MANUAL SPIDER-ELEVATOR

The BVM 250 Ton 7-5/8" Spider-Elevator is a manually operated power tool capable of handling casing sizes from 2-3/8" through 7-5/8" OD. When used in a set of one elevator and one spider, they allow the string to be rapidly tripped in or out of the well with minimal interaction by the operator. The Spider-Elevator is made from alloy steel, heat treated, magnetic particle inspected, and is manufactured and load tested per API 7K & 8C.



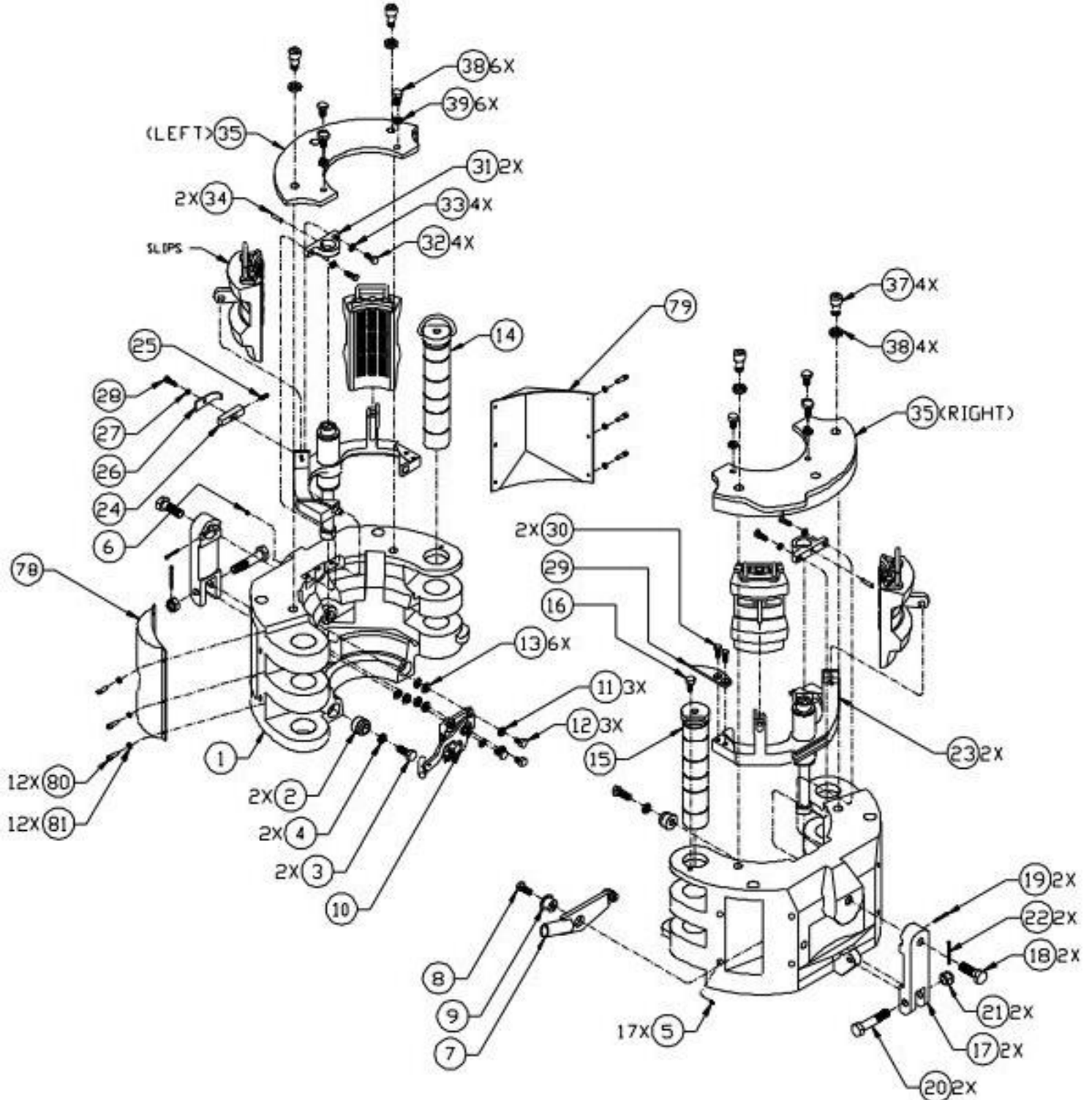
BVM CORPORATION

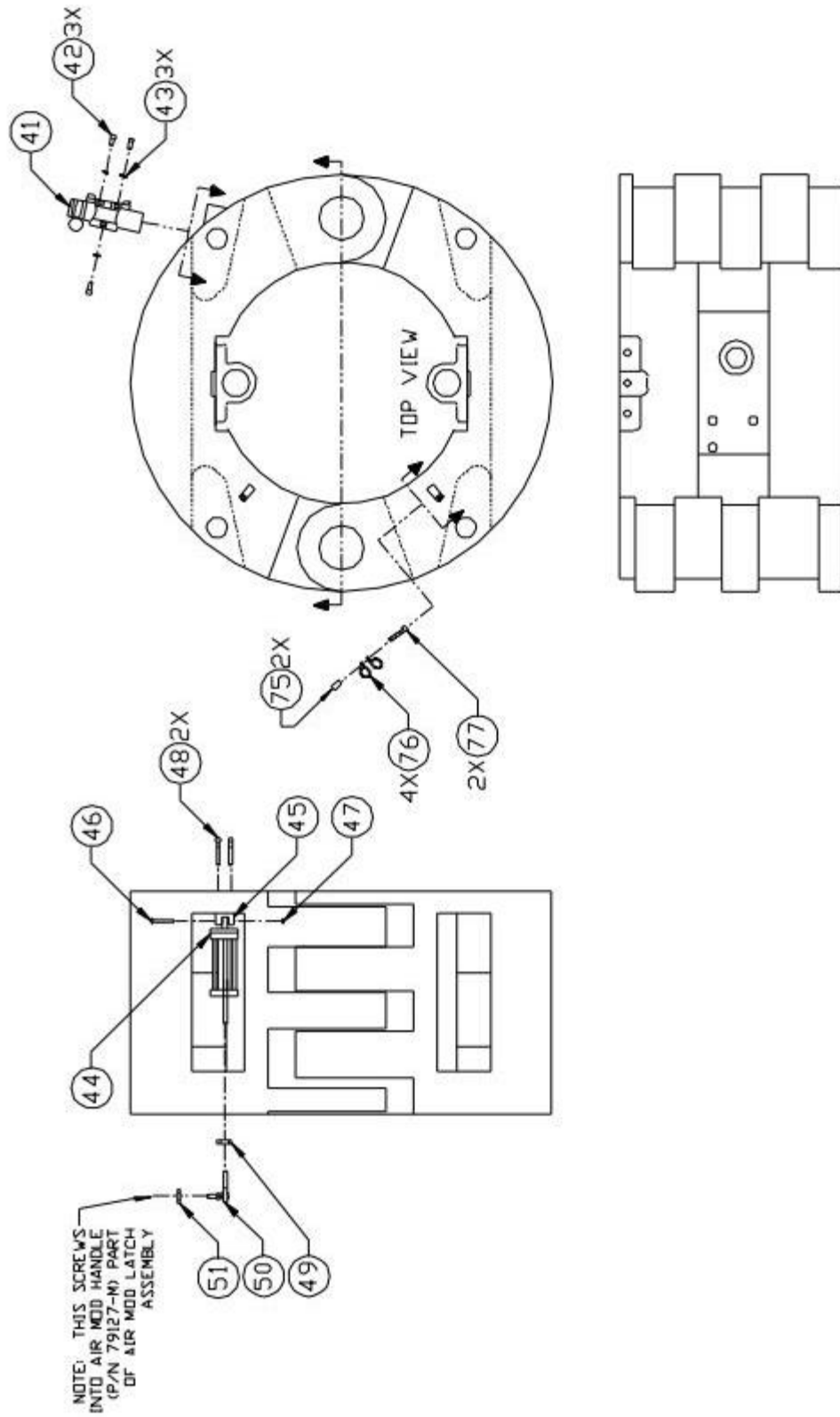
307 MAGNOLIA BUSINESS PARK DR.
MAGNOLIA, TX 77354; PHONE: 346-296-5501
www.bvmcorp.com; sales@bvmcorp.com

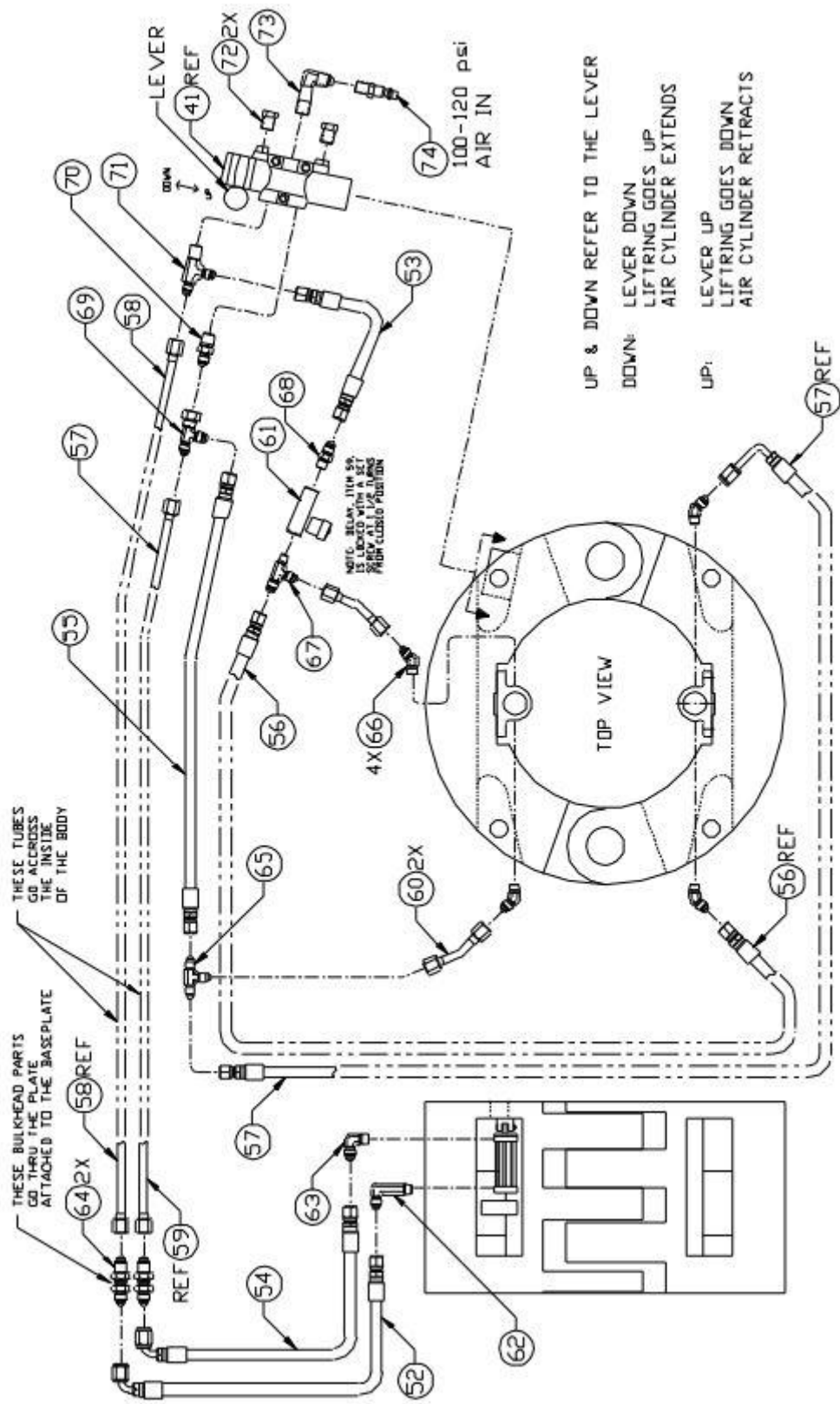
ITEM #	BVM Corp PART #	1.2.3. DESCRIPTION	QTY/ UNIT
	79200	ELEVATOR/SPIDER ASSY, 200/250 Ton Basic.....	Ref.
1	79109-1	BODY.....	1
2	79882	BUTTON, Register.....	2
3	1212C-16-8	SCREW, Socket Head.....	2
5	940308-1	FITTING, Grease.....	17
6	79001-12-C	PLUG, Pipe.....	1
7	79090	LEVER ASSY, Beam Lifting (see Fig. 7-5 for breakdown).....	1
8	1410C-14-5	SCREW, Cap Hex Head.....	1
9	79585	PIVOT, Lever.....	1
10	79680	LATCH ASSY (see Fig. 7-6 for breakdown).....	1
11	20100-00-0	LOCKWASHER.....	3
12	1410C-10-5	SCREW, Cap Hex Head.....	3
13	28100-00-0	WASHER, Flat.....	6
14	79121	PIN ASSY, Removable Hinge.....	1
15	79124	PIN ASSY, Stationary Hinge.....	1
16	79610	SCREW, Shoulder Hex Head.....	1
17	79803	CATCH LINK.....	2
18	79805	SCREW, Upper Link Block.....	2
19	30040-24-0	PIN, Cotter.....	2
20	79261	SCREW, Lower Link Block.....	2
21	6816C-00-5	NUT, Castle.....	2
22	30040-16-0	PIN, Cotter.....	2
23	79116	BEAM ASSY, Leveling (see Fig. 7-7 for breakdown)....	2
24	79614	LATCH, Dog.....	1
25	79616	SPRING, Compression (for replacement order 79141)....	1
26	79615	RETAINER, Dog (for replacement order 79141).....	1
27	20060-00-0	LOCKWASHER.....	1
28	1406C-12-5	SCREW, Cap Hex Head.....	1
29	79609	TANG, Leveling Beam Support (for replacement order 79518).....	1
30	2208C-10-5	SCREW, Flat Head.....	2
31	79125	POST, Leveling Beam Guide.....	2
32	79126	BLOCK, Pillow (for replacement order 79520).....	2
33	1208C-12-8	SCREW, Socket Head.....	4
34	20080-00-0	LOCKWASHER.....	4
35	79606-3	PIN, Pillow Block.....	2
36	79521	PLATE, Top.....	2
37	1416C-18-5	SCREW, Cap Hex Head.....	4
38	20160-00-0	LOCKWASHER.....	4
39	1412F-10-5	SCREW, Cap Hex Head.....	6
40	20120-00-0	LOCKWASHER.....	6

BVM 250 TON 7-5/8" PNEUMATIC SPIDER-ELEVATOR

The BVM 250 Ton 7-5/8" Spider-Elevator is a pneumatically operated power tool capable of handling casing sizes from 2-3/8" through 7-5/8" OD. When used in a set of one elevator and one spider, they allow the string to be rapidly tripped in or out of the well with minimal interaction by the operator. The Spider-Elevator is made from alloy steel, heat treated, magnetic particle inspected, and is manufactured and load tested per API 7K & 8C.







ITEM #	BVM Corp PART #	1.2.3. DESCRIPTION	QTY/ UNIT
	79200P	ELEVATOR/SPIDER ASSY, 200/250 Ton Air Operating.	Ref.
1	79109M	BODY.....	1
2	79882	BUTTON, Register.....	2
3	1212C-16-8	SCREW, Socket Head.....	2
5	940308-1	FITTING, Grease.....	17
6	79001-12-C	PLUG, Pipe.....	1
7	79090	LEVER ASSY, Beam Lifting (see Fig. 7-5 for breakdown).....	1
8	1410C-14-5	SCREW, Cap Hex Head.....	1
9	79585	PIVOT, Lever.....	1
10	79680M	LATCH ASSY, Air Operating (see Fig. 8-5 for breakdown).....	1
11	20100-00-0	LOCKWASHER.....	3
12	1410C-14-5	SCREW, Cap Hex Head.....	3
13	22100-00-0	WASHER, Flat.....	6
14	79120	PIN ASSY, Removable Hinge.....	1
15	79120	PIN ASSY, Stationary Hinge.....	1
16	79610	SCREW, Shoulder Hex Head.....	1
17	79803	CATCH LINK.....	2
18	79805	SCREW, Upper Link Block.....	2
19	30030-32-0	PIN, Cotter.....	2
20	79261	SCREW, Lower Link Block.....	2
21	6816C-00-5	NUT, Castle.....	2
22	30030-24-0	PIN, Cotter.....	2
23	79116M	BEAM ASSY, Air Operating Leveling (see Fig. 8-6 for breakdown).....	2
24	79614M	LATCH, Dog Modified.....	1
25	79616	SPRING, Compression (for replacement order 79141)....	1
26	79615	RETAINER, Dog (for replacement order 79141).....	1
27	20060-00-0	LOCKWASHER.....	1
28	1406C-12-5	SCREW, Cap Hex Head.....	1
29	79609	TANG, Leveling Beam Support (for replacement order 79518).....	1
30	1008C-08-0	SCREW, Flat Head.....	2
31	79126	BLOCK, Pillow (for replacement order 79520).....	2
32	1208C-12-8	SCREW, Socket Head.....	4
33	20080-00-0	LOCKWASHER.....	4
34	79606-3	PIN, Pillow Block.....	2
35	10422	RETAINER ASSEMBLY, Air Operated Top.....	1
36	----	NOT USED	
37	1416C-32-5	SCREW, Cap Hex Head.....	4
38	20160-00-0	LOCKWASHER.....	4
39	1412F-10-5	SCREW, Cap Hex Head.....	6
40	20120-00-0	LOCKWASHER.....	6

41	79930	VALVE, Beam Air Actuator.....	1
42	1204F-12-5	SCREW, Socket Head Cap.....	3
43	20040-00-0	LOCKWASHER.....	3
44	79933	CYLINDER, Latch.....	1
45	10442	BRACKET, Air Cylinder.....	1
46	120JF-14-8	SCREW.....	1
47	620JF-00-0	LOCKNUT.....	1
48	1204C-24-8	SCREW, Socket Head Cap.....	2
49	6005F-00-0	NUT, Hex.....	1
50	79937	LINKAGE ROD ENDS.....	1
51	6205F-00-0	LOCKNUT.....	1
52	10435	HOSE, Retract.....	1
53	10436	HOSE, Main Beam Lower.....	1
54	10437	HOSE, Extend.....	1
55	10438	HOSE, Main Beam Lift.....	1
56	10439	HOSE, Farside Beam Lower.....	1
57	10440	HOSE, Farside Beam Lift.....	1
58	10444	TUBE, Air Cylinder Retract.....	1
59	10445	TUBE, Air Cylinder Extend.....	1
60	10446	TUBE, Lift Cylinder Extension.....	1
61	BPF200B	DELAY.....	1
62	B4-CCCTX-S	ELBOW, Extra Long Male.....	1
63	B4-CTX-S	ELBOW, Male.....	1
64	B4-WTX-S	UNION, Bulkhead.....	2
65	B4-JTX-S	TEE, Union.....	1
66	B4-VTX-S	ELBOW, 45 Deg Male.....	4
67	B4-RTX-S	TEE, Male Run.....	1
68	B4-FTX-S	CONNECTOR, Male.....	1
69	B4-R6X-S	TEE, Swivel Nut Run.....	1
70	B4-4-FTX-S	CONNECTOR, Male.....	1
71	B4-4-4-RTX-S	TEE, Male Run.....	1
72	BBV2	VENT, 1/4" Breather.....	2
73	B1/4 CR-S	ELBOW, Male Pipe.....	1
74	BH3C	FPT 2/30 Series.....	1
75	10447	RAISER, Clamp.....	1
76	10448	CLAMP.....	4
77	1204C-10-8	SCREW, Socket Head Cap.....	2
78	10431	METAL GUARD, Rounded.....	1
79	10432	METAL GUARD, Triangle.....	1
80	1206C-06-8	SCREW, Socket Head Cap.....	12
81	20060-00-0	LOCKWASHER.....	12