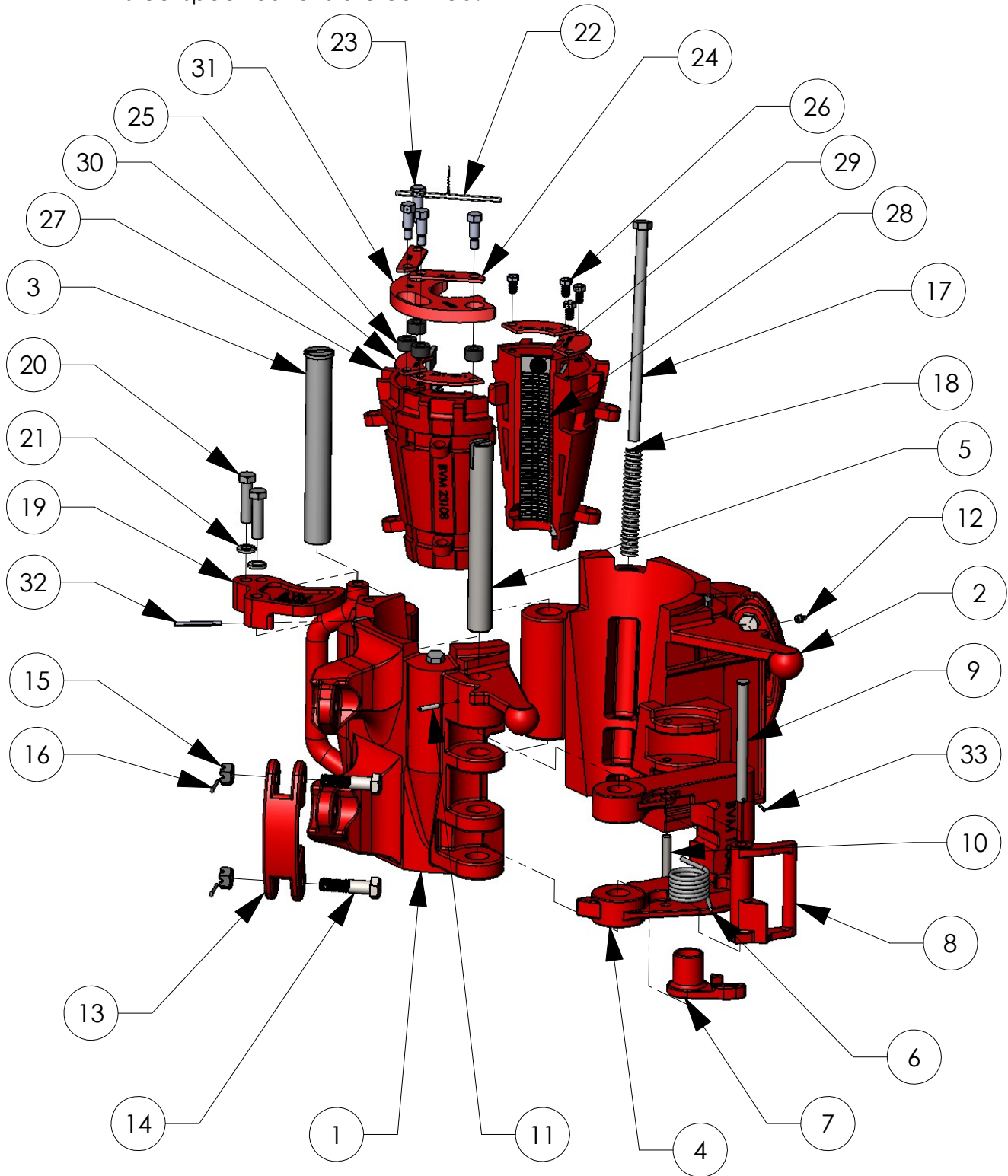


BVM YT ELEVATOR

BVM's YT Elevators are Slip-type Elevators and used for handling tubing ranging in size from 1.315" to 3-1/2" and have a load rating of 75 tons. BVM elevators are made from alloy steel, heat treated, load tested and magnetic partical inspected. All steel specifications are certified.



BVM CORPORATION

430 S. NAVAJO STREET, DENVER CO 80223
PHONE: 303-975-1402; FAX: 303-975-0981
www.bvmcorp.com; sales@bvmcorp.com

BVM YT ELEVATOR

#		DESCRIPTION	PART #
1	1	BODY	23105L
2	1	DOOR	23105R
3	1	HINGE PIN	23116
4	1	LATCH	15348
5	1	LATCH PIN	24182
6	1	LATCH SPRING	12978
7	1	LATCH CAM	12946
8	1	LATCH LOCK	12972
9	1	LATCH LOCK PIN	13530
10	1	DOOR LUG PIN	12529
11	1	LATCH PIN RETAINER	40040-11-0
12	1	GREASE FITTING	940308-1
13	2	LINK BLOCK	9519
14	4	LINK BLOCK BOLT	8145
15	4	LINK BLOCK NUT	6812C-00-5
16	4	COTTER PIN	30AB0-12-0
17	4	SLIP BOLT	1410C-100-8
18	4	SLIP SPRING	23113
19	1	GUIDE PLATE	23630
20	2	GUIDE PLATE SCREW	1410C-20-5
21	2	GUIDE PLATE LOCKWASHER	20100-00-0
22*	AR	LOCKWIRE	947879
23*	4	HEX HEAD CAPSCREW	27697
24*	2	SETTING RING RETAINER 3 1/2"	27546
24*	2	SETTING RING RETAINER 2 7/8"	27507
25*	4	SETTING RING BUSHING	27696
26*	4	HEX HEAD CAPSCREW	27532
32	1	HINGE PIN RETAINER	40040-22-0
33	1	COTTER PIN	30020-08-0

3 1/2" SLIP SIZE			23108-5
27	4	SLIP	23108-DS
28	24	INSERT	24774
29	8	INSERT SPACER	24507
30	4	INSERT RETAINER	27530
31	1	SLIP SETTING RING	27813

3 1/2" X 2 7/8" SLIP SIZE			23108-3
27	4	SLIP	23108-DS
28	24	INSERT	30358
29	8	INSERT SPACER	24507
30	4	INSERT RETAINER	27530
31	1	SLIP SETTING RING	27695

#	QTY	DESCRIPTION	PART #
2 7/8" SLIP SIZE			23108-4
27	4	SLIP	23108-SS
28	12	INSERT	24773
29	4	INSERT SPACER	24508
30	4	INSERT RETAINER	27451
31	1	SLIP SETTING RING	27695

2 7/8" x 2 3/8" SLIP SIZE			23108-6
27	4	SLIP	23108-SS
28	12	INSERT	29255
29	4	INSERT SPACER	24508
30	4	INSERT RETAINER	27451
31	1	SLIP SETTING RING	27694

2 7/8" x 2 1/16" SLIP SIZE			23108-7
27	4	SLIP	23108-SS
28	12	INSERT	29256
29	4	INSERT SPACER	24508
30	4	INSERT RETAINER	27451
31	1	SLIP SETTING RING	27812

2 7/8" x 2" SLIP SIZE			23108-8
27	4	SLIP	23108-SS
28	12	INSERT	29256
29	4	INSERT SPACER	24508
30	4	INSERT RETAINER	27451
31	1	SLIP SETTING RING	27821

2 7/8" x 1.900" SLIP SIZE			23108-9
27	4	SLIP	23108-SS
28	12	INSERT	29257
29	4	INSERT SPACER	24508
30	4	INSERT RETAINER	27451
31	1	SLIP SETTING RING	27811

2 7/8" x 1.600" SLIP SIZE			23108-10
27	4	SLIP	23108-SS
28	12	INSERT	29258
29	4	INSERT SPACER	24508
30	4	INSERT RETAINER	27451
31	1	SLIP SETTING RING	27810

2 7/8" x 1.315" SLIP SIZE			23108-11
27	4	SLIP	23108-SS
28	12	INSERT	29259
29	4	INSERT SPACER	24508
30	4	INSERT RETAINER	27451
31	1	SLIP SETTING RING	29001

* = Part of Slip Assembly
AR = As Required