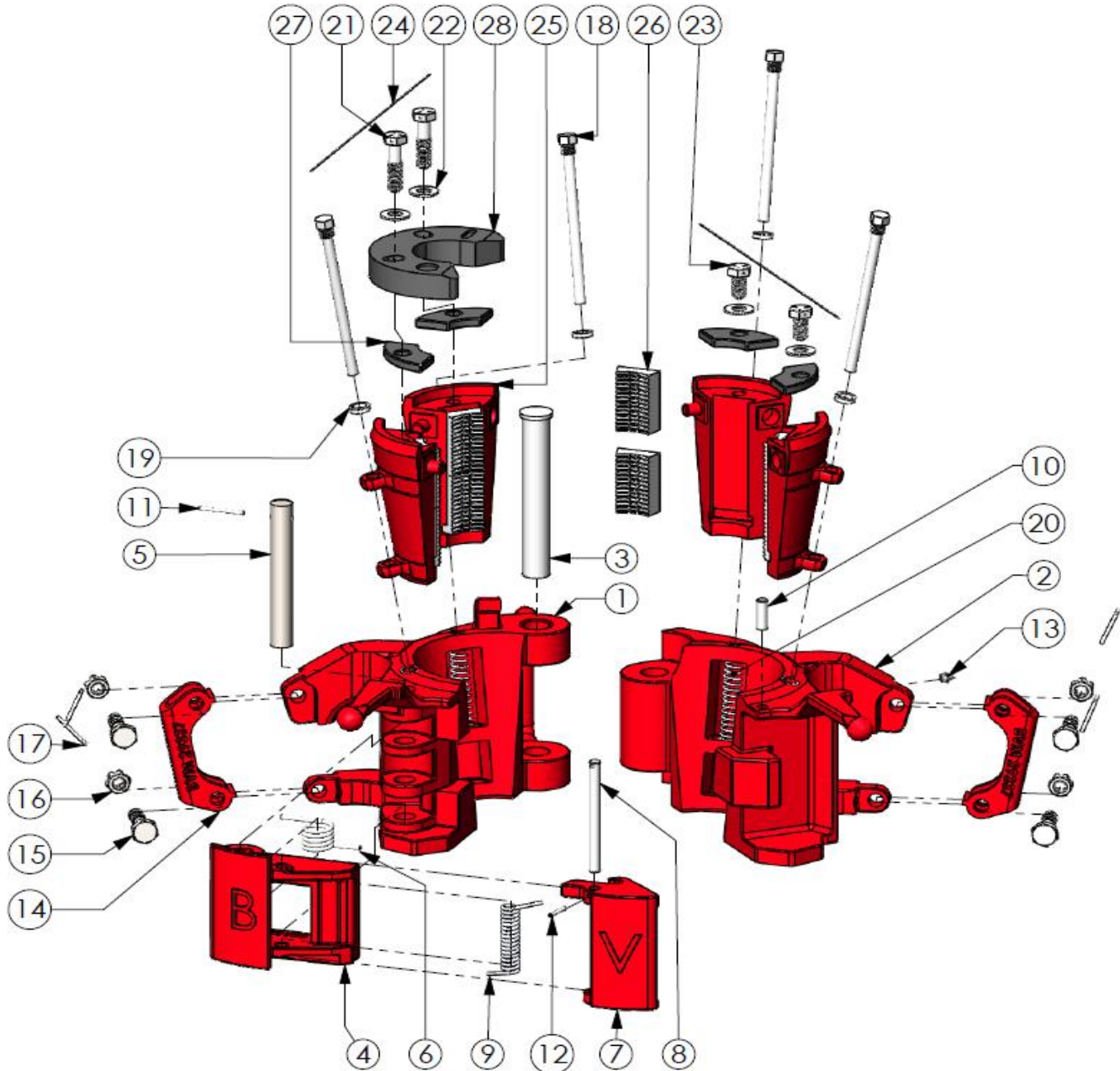


BVM MYT 40 TON ELEVATOR

MYT elevators are slip type elevators used with drill pipe ranging from 1.315" to 2- 7/8"
These elevators are produced from alloy heat treated steel and have a working
capacity of 40 tons.



BVM CORPORATION

430 S. NAVAJO STREET, DENVER CO 80223
PHONE: 303-975-1402; FAX: 303-975-0981
www.bvmcorp.com; sales@bvmcorp.com

BVM MYT 40 TON ELEVATOR

REF NO.	NO. REQ	DESCRIPTION	PART NO.
1	1	BODY	29328L
2	1	DOOR	29328R
3	1	HINGE PIN	29333
4	1	LATCH	30652
5*	1	LATCH PIN	29334-1*
6*	1	LATCH SPRING	25465
7	1	LATCH LOCK	30653
8	1	LATCH LOCK PIN	29335
9	1	LATCH LOCK SPRING	29349
10	1	LATCH LOCK DOOR PIN	51080-12-0
11	1	LATCH PIN RETAINER	40030-17-0
12	1	LATCH LOCK PIN RETAINER	40030-10-0
13	1	GREASE FITTING	940308-1
14	2	LINK BLOCK	29337
15	4	LINK BLOCK BOLT	939051-65
16	4	LINK BLOCK NUT	6810C-00-5
17	4	COTTER PIN	30AB0-12-0
18	4	SLIP BOLT	29336
19	4	HI COLLAR LOCKWASHER	26100-00-0
20	4	SLIP SPRING	29340
21**	2	SETTING RING SCREW	29347
22**	4	FLATWASHER	22100-00-0
23**	2	HEX HEAD CAPSCREW	939098-15
24**	AR	LOCKWIRE	947879
		2 7/8" SLIP SIZE	29343-1
25	4	SLIP	29343
26	8	INSERT	24773
27	4	INSERT RETAINER	29344
28	1	SETTING RING	29348

* = Use Latch Pin P/N 29334-M & Latch Spring P/N 29338 for elevators with S/N lower than 31821.
Use Latch Pin P/N 29334-1 & Latch Spring P/N 25465 for elevators with S/N 31821 or higher

** = Part of Slip Assembly

AR = As Required

REF NO.	NO. REQ	DESCRIPTION	PART NO.
		2 7/8" X 2 3/8" SLIP SIZE	29343-2
25	4	SLIP	29343
26	8	INSERT	29255
27	4	INSERT RETAINER	29344
28	1	SETTING RING	29345
		2 1/16" X 2 1/16" SLIP SIZE	29343-3
25	4	SLIP	29343
26	8	INSERT	29256
27	4	INSERT RETAINER	29344
28	1	SETTING RING	29350
		2 1/16" X 2.000" SLIP SIZE	29343-4
25	4	SLIP	29343
26	8	INSERT	29256
27	4	INSERT RETAINER	29344
28	1	SETTING RING	29351
		2 1/16" X 1.900" SLIP SIZE	29343-5
25	4	SLIP	29343
26	8	INSERT	29257
27	4	INSERT RETAINER	29344
28	1	SETTING RING	29352
		2 1/16" X 1.660" SLIP SIZE	29343-6
25	4	SLIP	29343
26	8	INSERT	29258
27	4	INSERT RETAINER	29344
28	1	SETTING RING	29353
		2 1/16" X 1.315" SLIP SIZE	29343-7
25	4	SLIP	29343
26	8	INSERT	29259
27	4	INSERT RETAINER	29344
28	1	SETTING RING	29354

