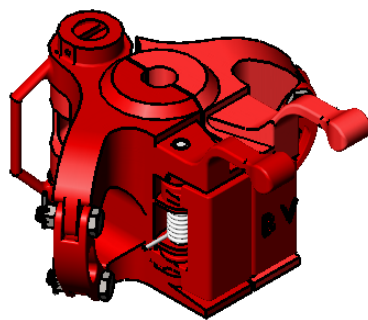
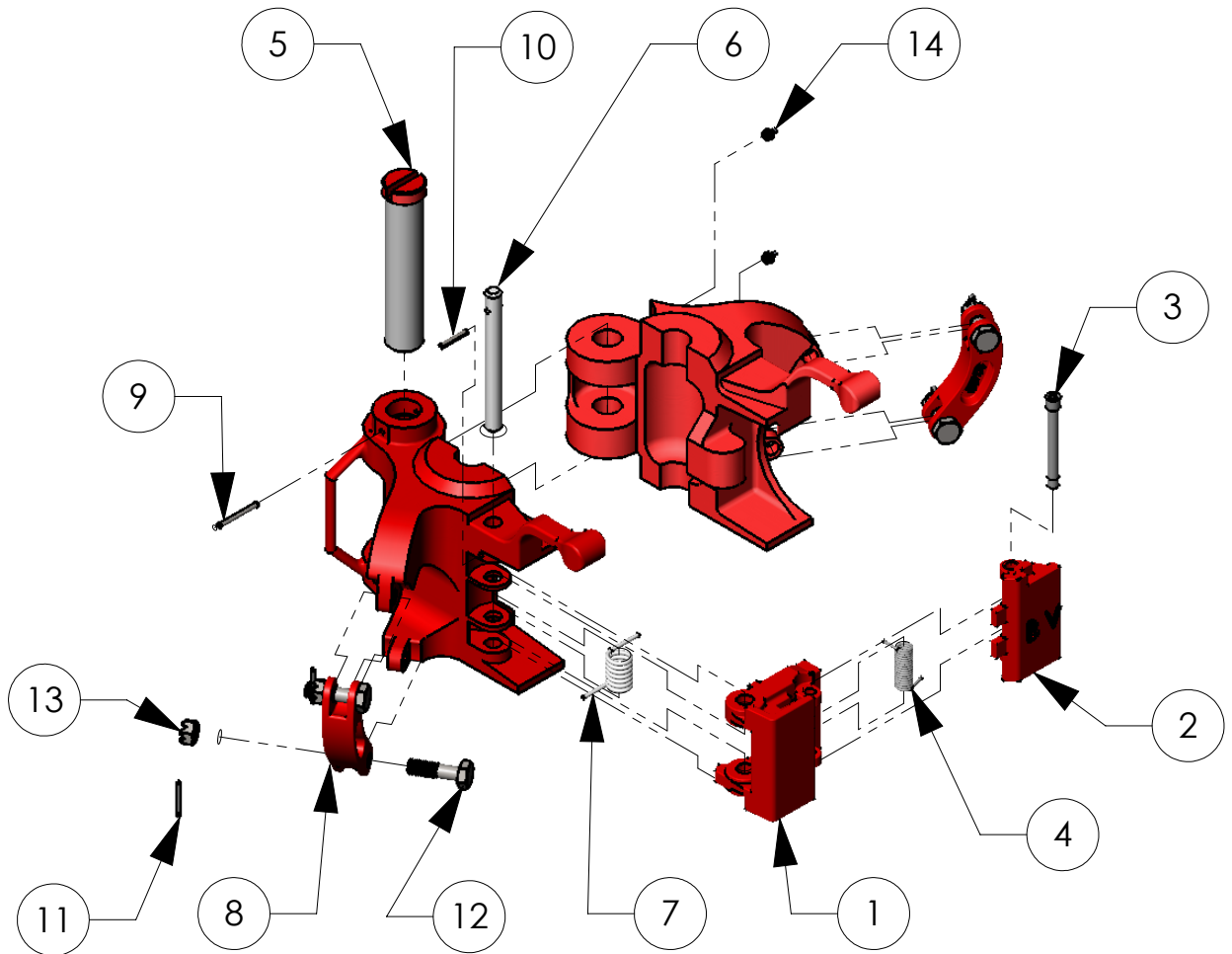


# BVM CENTER LATCH ELEVATOR TYPE "TA"

BVM's TA-35, TA-65, TA-100, and TA-150 are high collar type center latch elevators for API drill pipe, casing and tubing. They range in size from 1.050" through 11 3/4". BVM elevators are made from alloy steel, heat treated and magnetic particle inspected. All steel specifications are certified.



TA-65 SHOWN

## BVM CORPORATION

307 MAGNOLIA BUSINESS PARK DR.  
MAGNOLIA, TX 77354; PHONE: 346-296-5501  
www.bvmcorp.com; sales@bvmcorp.com

# BVM CENTER LATCH ELEVATOR TYPE "TA"

ITEM NO.	PART NAME	QTY	TA 35		TA 65		TA 65		TA 100	
			1.050" - 2.875"		1.660" - 2.875"		3 1/2" - 4 1/2"		2 3/8" - 2 7/8"	
			26.67mm - 73.03mm		42.16mm - 73.03mm		88.9mm - 114.3mm		60.33mm - 73.03mm	
			PART NO.	WEIGHT (lbs)	PART NO.	WEIGHT (lbs)	PART NO.	WEIGHT (lbs)	PART NO.	WEIGHT (lbs)
-	BODY	1	32387L	22.7	32385L	44.6	32386L	61.6	32383L	46.6
-	DOOR	1	32387R	22.9	32385R	45.9	32386R	65.9	32383R	50.7
-	LATCH LOCK ASSEMBLY	1	32484	4.9	32382	9.2	32382	9.2	32382	9.2
1	LATCH	1	32446	3.0	32380	6.3	32380	6.3	32380	6.3
2	LATCH LOCK	1	32447-1	1.6	32381	2.5	32381	2.5	32381	2.5
3	LATCH LOCK PIN	1	36685	0.1	36208	0.3	36208	0.3	36208	0.3
4	LATCH LOCK SPRING	1	32483	0.1	32469	0.1	32469	0.1	32469	0.1
5	HINGE PIN	1	32917	3.9	32914	4.9	32916	4.9	32915-1	4.9
6	LATCH PIN	1	32424-4	0.5	32424-3	0.9	32424-2	0.9	32424-5	0.9
7	LATCH SPRING	1	32482	0.2	32470	0.2	32470	0.2	32470	0.2
8	LINK BLOCK	2	23404	1.4	32430	2	32430	2	32430	2
9	HINGE PIN RETAINER	1	40050-22-0	0.1	40040-18-0	0.1	40040-22-0	0.1	40040-24-0	0.1
10	LATCH PIN RETAINER	1	40030-08-0	0.1	40030-12-0	0.1	40030-12-0	0.1	40040-12-0	0.1
11	COTTER PIN	4	30AB0-12-0	0.1	30AB0-12-0	0.1	30AB0-12-0	0.1	30AB0-12-0	0.1
12	LINK BLOCK BOLT	4	23406	0.1	939051-65	0.3	939051-65	0.3	939051-65	0.3
13	LINK BLOCK NUT	4	6808C-00-5	0.1	6810C-00-5	0.1	6810C-00-5	0.1	6810C-00-5	0.1
14	GREASE FITTING	2	940308-1	0.1	940308-1	0.1	940308-1	0.1	940308-1	0.1
15	LATCH LOCK PIN RETAINER	1	40020-06-0	0.1	-	-	-	-	-	-

ITEM NO.	PART NAME	QTY	TA 100		TA 100		TA 150		TA 150	
			3 1/2" - 4 1/2"		5" - 8 5/8"		4 1/2" - 8 5/8"		8 1/2" - 11 3/4"	
			88.9mm - 114.3mm		127mm - 219.08mm		114.3mm - 219.08mm		215.90mm - 298.45mm	
			PART NO.	WEIGHT (lbs)	PART NO.	WEIGHT (lbs)	PART NO.	WEIGHT (lbs)	PART NO.	WEIGHT (lbs)
-	BODY	1	32384L	76.3	29960L	156.5	32754L	194.0	39342L	235.7
-	DOOR	1	32384R	82.9	29960R	168.2	32754R	209.1	39342R	250.0
-	LATCH LOCK ASSEMBLY	1	32382	9.2	32753	22	32753	22	32753	22
1	LATCH	1	32380	6.3	32752	14.6	32752	14.6	32752	14.6
2	LATCH LOCK	1	32381	2.5	32757	6.6	32757	6.6	32757	6.6
3	LATCH LOCK PIN	1	36208	0.3	36207	0.6	36207	0.6	36207	0.6
4	LATCH LOCK SPRING	1	32469	0.1	32758	0.1	32758	0.1	32758	0.1
5	HINGE PIN	1	32919-1	4.9	29963	6.2	32924	6.2	32924	6.2
6	LATCH PIN	1	32424-1	0.9	29334	2.9	34242-1	2.9	34242-1	2.9
7	LATCH SPRING	1	32470	0.2	32760	0.2	32760	0.2	32760	0.2
8	LINK BLOCK	2	32430	2	9519	5.4	9519	5.4	9519	5.4
9	HINGE PIN RETAINER	1	40040-24-0	0.1	40040-32-0	0.1	40050-32-0	0.1	40050-32-0	0.1
10	LATCH PIN RETAINER	1	40040-12-0	0.1	40040-18-0	0.1	40040-18-0	0.1	40040-22-0	0.1
11	COTTER PIN	4	30AB0-12-0	0.1	30AB0-14-0	0.1	30AB0-14-0	0.1	30AB0-14-0	0.1
12	LINK BLOCK BOLT	4	939051-65	0.3	8145	0.4	8145	0.4	8145	0.4
13	LINK BLOCK NUT	4	6810C-00-5	0.1	6812C-00-5	0.1	6812C-00-5	0.1	6812C-00-5	0.1
14	GREASE FITTING	2	940308-1	0.1	940308-1	0.1	940308-1	0.1	940308-1	0.1

# TA Elevator Bore Codes

Size (in)	Style	35 Ton	65 Ton	100 Ton	150 Ton
1.050"	Plain (NU) Tubing	32387-150	-	-	-
1.050"	Upset (EU) Tubing	32387-151	-	-	-
1.315"	Plain (NU) Tubing	32387-152	-	-	-
1.315"	Upset (EU) Tubing	32387-153	-	-	-
1.660"	Plain (NU) Tubing	32387-154	32385-154	-	-
1.660"	Upset (EU) Tubing	32387-155	32385-155	-	-
1.900"	Plain (NU) Tubing	32387-156	32385-156	-	-
1.900"	Upset (EU) Tubing	32387-157	32385-157	-	-
2"	Drill Collar w/ Lift Plug	32387-823	32385-823	-	-
2 3/8"	Drill Collar w/ Lift Plug	32387-513	32385-513	32383-513	-
2 3/8"	Plain (NU) Tubing	32387-158	32385-158	32383-158	-
2 3/8"	Upset (EU) Tubing	32387-159	32385-159	32383-159	-
2 1/2"	Drill Collar w/ Lift Plug	32387-201	32385-201	32383-201	-
2 3/4"	Drill Collar w/ Lift Plug	32387-203	32385-203	32383-203	-
2 7/8"	Drill Collar w/ Lift Plug	32387-824	32385-824	32383-824	-
2 7/8"	Plain (NU) Tubing	32387-160	32385-160	32383-160	-
2 7/8"	Upset (EU) Tubing	32387-161	32385-161	32383-161	-
3"	Drill Collar w/ Lift Plug	32387-205	32385-205	32383-205	-
3 1/8"	Drill Collar w/ Lift Plug	-	-	32384-206	-
3 1/4"	Drill Collar w/ Lift Plug	-	32386-207	32384-207	-
3 3/8"	Drill Collar w/ Lift Plug	-	32386-795	32384-795	-
3 1/2"	Drill Collar w/ Lift Plug	-	32386-209	32384-209	-
3 1/2"	Drill Collar w/ Zip Lift Recess	-	-	32384-625	-
3 1/2"	Plain (NU) Tubing	-	32386-162	32384-162	-
3 1/2"	Upset (EU) Tubing	-	32386-163	32384-163	-
3 3/4"	Drill Collar w/ Lift Plug	-	32386-211	32384-211	-
3 3/4"	Drill Collar w/ Zip Lift Recess	-	32386-582	32384-582	-
3 7/8"	Drill Collar w/ Lift Plug	-	32386-763	32384-763	-
4"	Drill Collar w/ Lift Plug	-	32386-213	32384-213	-
4"	Plain (NU) Tubing	-	32386-164	32384-164	-
4"	Upset (EU) Tubing	-	32386-165	32384-165	-
4 1/8"	Drill Collar w/ Lift Plug	-	32386-519	32384-519	-
4 1/8"	Drill Collar w/ Zip Lift Recess	-	32386-177	32384-177	-
4 1/4"	Drill Collar w/ Lift Plug	-	32386-548	32384-548	-
4 1/2"	Casing	-	32386-129	32384-129	32754-129
4 1/2"	Drill Collar w/ Lift Plug	-	32386-215	32384-215	32754-215
4 1/2"	Drill Collar w/ Zip Lift Recess	-	32386-554	32384-554	-
4 1/2"	Plain (NU) Tubing	-	32386-166	32384-166	32754-166
4 1/2"	Upset (EU) Tubing	-	32386-167	32384-167	32754-167
4 3/4"	Casing	-	32386-130	32384-130	32754-130
4 3/4"	Drill Collar w/ Lift Plug	-	-	29960-354	32754-354

## TA Elevator Bore Codes

Size (in)	Style	35 ton	65 ton	100 ton	150 ton
4 3/4"	Drill Collar w/ Zip Lift Recess	-	32386-435	32384-435	-
5"	Casing	-	-	29960-131	32754-131
5"	Drill Collar w/ Lift Plug	-	-	29960-552	32754-552
5 1/4"	Drill Collar w/ Lift Plug	-	-	29960-219	32754-219
5 1/4"	Drill Collar w/ Zip Lift Recess	-	-	29960-179	32754-179
5 1/2"	Casing	-	-	29960-132	32754-132
5 1/2"	Drill Collar w/ Lift Plug	-	-	29960-411	32754-411
5 1/2"	Drill Collar w/ Zip Lift Recess	-	-	29960-180	32754-180
5 3/4"	Casing	-	-	29960-133	32754-133
5 3/4"	Drill Collar w/ Lift Plug	-	-	29960-222	32754-222
5 3/4"	Drill Collar w/ Zip Lift Recess	-	-	29960-181	32754-181
6"	Casing	-	-	29960-134	32754-134
6"	Drill Collar w/ Lift Plug	-	-	29960-349	32754-349
6"	Drill Collar w/ Zip Lift Recess	-	-	29960-362	32754-362
6 1/4"	Drill Collar w/ Lift Plug	-	-	29960-348	32754-348
6 1/4"	Drill Collar w/ Zip Lift Recess	-	-	29960-337	32754-337
6 3/8"	Drill Collar w/ Lift Plug	-	-	29960-331	32754-331
6 1/2"	Drill Collar w/ Lift Plug	-	-	29960-332	32754-332
6 1/2"	Drill Collar w/ Zip Lift Recess	-	-	29960-373	32754-373
6 5/8"	Casing	-	-	29960-135	32754-135
6 3/4"	Drill Collar w/ Lift Plug	-	-	29960-338	32754-338
6 3/4"	Drill Collar w/ Zip Lift Recess	-	-	29960-387	32754-387
7"	Casing	-	-	29960-136	32754-136
7"	Drill Collar w/ Lift Plug	-	-	29960-372	32754-372
7"	Drill Collar w/ Zip Lift Recess	-	-	29960-361	32754-361
7 1/4"	Drill Collar w/ Lift Plug	-	-	29960-335	32754-335
7 1/4"	Drill Collar w/ Zip Lift Recess	-	-	29960-357	32754-357
7 1/2"	Drill Collar w/ Lift Plug	-	-	29960-137	32754-137
7 1/2"	Drill Collar w/ Zip Lift Recess	-	-	29960-188	32754-188
7 5/8"	Casing	-	-	29960-137	32754-137
7 3/4"	Casing	-	-	29960-705	32754-705
7 3/4"	Drill Collar w/ Lift Plug	-	-	29960-550	32754-550
7 3/4"	Drill Collar w/ Zip Lift Recess	-	-	29960-339	32754-339
8"	Casing	-	-	29960-757	32754-757
8"	Drill Collar w/ Lift Plug	-	-	29960-334	32754-334
8"	Drill Collar w/ Zip Lift Recess	-	-	29960-336	32754-336
8 1/4"	Drill Collar w/ Lift Plug	-	-	29960-347	32754-347
8 1/4"	Drill Collar w/ Zip Lift Recess	-	-	29960-422	32754-422
8 3/8"	Casing	-	-	29960-759	32754-759
8 1/2"	Casing	-	-	29960-646	32754-646
8 1/2"	Drill Collar w/ Lift Plug	-	-	29960-580	32754-580

## TA Elevator Bore Codes

Size (in)	Style	35 ton	65 ton	100 ton	150 ton
8 1/2"	Drill Collar w/ Zip Lift Recess	-	-	29960-426	32754-426
8 5/8"	Casing	-	-	29960-139	32754-139
8 3/4"	Drill Collar w/ Lift Plug	-	-	-	39342-226
9"	Casing	-	-	-	39342-140
9"	Drill Collar w/ Lift Plug	-	-	-	39342-356
9"	Drill Collar w/ Zip Lift Recess	-	-	29960-427	39342-427
9 1/4"	Drill Collar w/ Lift Plug	-	-	-	39342-227
9 1/2"	Casing	-	-	-	39342-747
9 1/2"	Drill Collar w/ Lift Plug	-	-	-	39342-346
9 1/2"	Drill Collar w/ Zip Lift Recess	-	-	-	39342-370
9 5/8"	Casing	-	-	-	39342-141
9 5/8"	Drill Collar w/ Lift Plug	-	-	-	39342-479
9 3/4"	Drill Collar w/ Zip Lift Recess	-	-	-	39342-367
9 7/8"	Casing	-	-	-	39342-649
10 "	Casing	-	-	-	39342-831
10 "	Drill Collar w/ Lift Plug	-	-	-	39342-228
10 "	Drill Collar w/ Zip Lift Recess	-	-	-	39342-195
10 1/8"	Casing	-	-	-	39342-846
10 1/4"	Casing	-	-	-	39342-808
10 1/2"	Drill Collar w/ Lift Plug	-	-	-	39342-229
10 3/4"	Casing	-	-	-	39342-142
10 3/4"	Drill Collar w/ Zip Lift Recess	-	-	-	39342-527
11 "	Drill Collar w/ Lift Plug	-	-	-	39342-230
11 "	Drill Collar w/ Zip Lift Recess	-	-	-	39342-419
11 1/4"	Drill Collar w/ Zip Lift Recess	-	-	-	39342-196
11 3/4"	Casing	-	-	-	39342-143
11 3/4"	Drill Collar w/ Lift Plug	-	-	-	39342-621