

# BVM

CORPORATION  
USA



**Globally Recognized, USA made  
handling tools for 30 years  
The choice for rigs.**

# BVM CORPORATION

## USA

**BVM Manufacturing Company Incorporated maintains the following API Certifications:**

|  |  |  |
|--|--|--|
|  <p><b>Certificate of Authority to use the Official API Monogram</b><br/>License Number: 7K-0247 ORIGINAL</p> <p>The American Petroleum Institute hereby certifies that:</p> <p><b>BVM CORPORATION</b><br/>430 South Navajo Street<br/>Denver, Colorado</p> <p>is qualified to use the Official API Monogram in accordance with the provisions of the API Monogram License Agreement, which is available on the American Petroleum Institute's website at <a href="http://www.api.org">www.api.org</a>.</p> <p>The scope of this license includes the following products: <b>API Spec 7K</b> and <b>API Spec 7K-2</b>.</p> <p>Effective Date: JULY 31, 2012<br/>Expiration Date: AUGUST 31, 2016</p> <p><i>John A. Mikolajewicz</i><br/>Secretary, American Petroleum Institute</p> |  <p><b>Certificate of Authority to use the Official API Monogram</b><br/>License Number: 8C-0145 ORIGINAL</p> <p>The American Petroleum Institute hereby certifies that:</p> <p><b>BVM CORPORATION</b><br/>430 South Navajo Street<br/>Denver, Colorado</p> <p>is qualified to use the Official API Monogram in accordance with the provisions of the API Monogram License Agreement, which is available on the American Petroleum Institute's website at <a href="http://www.api.org">www.api.org</a>.</p> <p>The scope of this license includes the following products: <b>API Spec 8C</b> and <b>API Spec 8C-2</b>.</p> <p>Effective Date: AUGUST 31, 2012<br/>Expiration Date: AUGUST 31, 2016</p> <p><i>John A. Mikolajewicz</i><br/>Secretary, American Petroleum Institute</p> |  |
|  <p><b>Certificate of Registration</b><br/>API QMS REGISTERED<br/>1051</p> <p>The American Petroleum Institute hereby certifies that:</p> <p><b>BVM CORPORATION</b><br/>430 South Navajo Street<br/>Denver, Colorado</p> <p>is qualified to use the Official API Monogram in accordance with the provisions of the API Monogram License Agreement, which is available on the American Petroleum Institute's website at <a href="http://www.api.org">www.api.org</a>.</p> <p>Effective Date: August 31, 2012<br/>Expiration Date: August 31, 2016<br/>Registered Since: August 31, 2008</p> <p><i>John A. Mikolajewicz</i><br/>Secretary, American Petroleum Institute</p>   |  <p><b>Certificate of Registration</b><br/>REGISTRATION NO. TS-0794</p> <p>The American Petroleum Institute hereby certifies that:</p> <p><b>BVM CORPORATION</b><br/>430 South Navajo Street<br/>Denver, Colorado</p> <p>is qualified to use the Official API Monogram in accordance with the provisions of the API Monogram License Agreement, which is available on the American Petroleum Institute's website at <a href="http://www.api.org">www.api.org</a>.</p> <p><b>ISO/TS 29001</b></p> <p>Effective Date: August 31, 2012<br/>Expiration Date: August 31, 2016<br/>Registered Since: August 31, 2009</p> <p><i>John A. Mikolajewicz</i><br/>Secretary, American Petroleum Institute</p>   |  <p><b>Certificate of Registration</b><br/>REGISTRATION NO. Q1-0844</p> <p>The American Petroleum Institute hereby certifies that:</p> <p><b>BVM CORPORATION</b><br/>430 South Navajo Street<br/>Denver, Colorado</p> <p>is qualified to use the Official API Monogram in accordance with the provisions of the API Monogram License Agreement, which is available on the American Petroleum Institute's website at <a href="http://www.api.org">www.api.org</a>.</p> <p><b>API Specification Q1</b></p> <p>Effective Date: August 31, 2012<br/>Expiration Date: August 31, 2016<br/>Registered Since: August 31, 2008</p> <p><i>John A. Mikolajewicz</i><br/>Secretary, American Petroleum Institute</p> |

**Note: Not all products listed in this catalog are authorized to carry the API Monogram.**

SALES@BVMCORP.COM  
877-975-1402  
303-975-1402  
FAX - 303-975-0981  
INTL - (01)303-975-1402  
WWW.BVMCORP.COM

# LOAD TESTING - REPAIR - RECERTIFICATION



**BVM is uniquely qualified to preform LOAD TESTING, REPAIR and RECERTIFICATION on elevators, links and tongs. Our manufacturing plant based repair and recertification facility offers access to our supply of new parts, skilled and certified welders and load test technicians as well as our NDE and Quality Control specialists.**

**We utilize the same NDE testing, load testing and certified welding procedures for recertification as we do for our new tools. The sand blasting and factory paint booth assure a factory new paint application after testing.**





# ELEVATORS

## SIDE DOOR 90 DEGREE ELEVATORS

| PART NO. | TYPE | TONS | SIZE              | WEIGHT |
|----------|------|------|-------------------|--------|
| 33854    | SLX  | 100  | 1.660" - 5 1/2"   | 175    |
| 31239    | SLX  | 150  | 3 1/2" - 8 5/8"   | 340    |
| 33950    | SLX  | 150  | 9 5/8" - 10 3/4"  | 420    |
| 33982    | SLX  | 150  | 11 3/4" - 13 3/8" | 460    |
| 33632    | SLX  | 150  | 16" - 20"         | 664    |
| 33175    | SLX  | 150  | 24" - 30"         | 1075   |
| 33180    | SLX  | 150  | 36"               | 2100   |
| 43239    | SLX  | 250  | 4 1/2" - 8 5/8"   | 550    |
| 43950    | SLX  | 250  | 9 5/8" - 10 3/4"  | 650    |
| 43982    | SLX  | 250  | 11 3/4" - 13 3/8" | 525    |
| 43632    | SLX  | 250  | 16" - 20"         | 1000   |
| 43175    | SLX  | 250  | 24" - 30"         | 1092   |
| 43180    | SLX  | 250  | 36"               | 2200   |
| 29965    | SX   | 350  | 6 5/8" - 13 3/8"  | 1076   |
| 29966    | SX   | 350  | 16" - 20"         | 280    |
| 29964    | SX   | 500  | 6 5/8" - 13 3/8"  | 1180   |
| 30729    | SX   | 500  | 16" - 20"         | 1346   |
| 46950    | SX   | 750  | 7 5/8" - 13 3/8"  | 2650   |

## CENTER LATCH 18 DEGREE DRILL PIPE ELEVATORS

| PART NO. | TYPE | TONS | SIZE            | WEIGHT |
|----------|------|------|-----------------|--------|
| 30157    | MG   | 100  | 2 3/8" - 5"     | 235    |
| 30156    | RG   | 150  | 2 3/8" - 5"     | 330    |
| 13884    | MGG  | 175  | 2 1/8" - 5"     | 52     |
| 35005    | MGG  | 250  | 2 3/8" - 5 1/2" | 571    |
| 31068    | GG   | 350  | 2 3/8" - 5 1/2" | 734    |
| 70013    | HGG  | 500  | 2 7/8" - 6 5/8" | 980    |

## CENTER LATCH 90 DEGREE COLLAR TYPE ELEVATORS

| PART NO. | TYPE | TONS | SIZE            | WEIGHT |
|----------|------|------|-----------------|--------|
| 32387    | TA   | 35   | 1.050" - 2 7/8" | 55     |
| 32385    | TA   | 65   | 1.660" - 2 7/8" | 113    |
| 32386    | TA   | 65   | 3 1/2" - 4 1/2" | 150    |
| 32383    | TA   | 100  | 2 3/8" - 2 7/8" | 127    |
| 32384    | TA   | 100  | 3 1/2" - 4 1/2" | 157    |
| 29960    | TA   | 100  | 5 1/2" - 8 5/8" | 352    |
| 32754    | TA   | 150  | 5" - 8 5/8"     | 413    |
| 25462    | RA   | 125  | 2 3/8" - 3 1/2" | 158    |
| 25459    | RA   | 150  | 2 3/8" - 4 1/2" | 220    |
| 13373    | RA   | 250  | 3 1/2" - 7"     | 352    |
| 12942    | RAA  | 350  | 4 1/2" - 5 1/2" | 550    |

## SINGLE JOINT TYPE ELEVATORS

| PART NO. | TYPE | TONS | SIZE              | WEIGHT |
|----------|------|------|-------------------|--------|
| 183      | SJ   | 5    | 2 3/8" - 5 1/2"   | 47     |
| 184      | SJ   | 5    | 5 3/4" - 7 5/8"   | 52     |
| 185      | SJ   | 5    | 8 5/8" - 9 5/8"   | 68     |
| 186      | SJ   | 5    | 10 3/4" - 13 5/8" | 114    |
| 187      | SJ   | 5    | 16" - 20"         | 158    |
| 188      | SJ   | 5    | 21 1/2" - 24 1/2" | 295    |
| 189      | SJ   | 5    | 24" - 30"         | 412    |
| 200      | SJ   | 6    | 36"               | 690    |

## SUCKER ROD TYPE ELEVATORS

| PART NO. | TYPE  | TONS | SIZE          | WEIGHT |
|----------|-------|------|---------------|--------|
| 84001    | SR    | 20   | 5/8" - 3/4"   | 30     |
| 84002    | SR    | 20   | 3/4" - 7/8"   | 30     |
| 84003    | SR    | 20   | 1"            | 30     |
| 84004    | SR    | 20   | 1 1/8"        | 31     |
| 84003P   | SRP   | 20   | 5/8" - 1 1/8" | 34     |
| 84018    | PLATE |      | 5/8" - 3/4"   | 0.25   |
| 84019    | PLATE |      | 3/4" - 7/8"   | 0.25   |
| 84020    | PLATE |      | 1"            | 0.25   |
| 84021    | PLATE |      | 1 1/8"        | 0.25   |

## SLIP TYPE ELEVATORS - LESS SLIPS AND GUIDES

| PART NO. | TYPE | TONS | SIZE             | WEIGHT |
|----------|------|------|------------------|--------|
| 28750    | LYT  | 20   | 1 1/2" - 2 1/16" | 57     |
| 29328    | MYT  | 40   | 1.315" - 2 7/8"  | 157    |
| 23105    | YT   | 75   | 1.315" - 3 1/2"  | 356    |
| 39284    | HYT  | 150  | 2 3/8" - 3 1/2"  | 525    |
| 24140    | YC   | 75   | 3 1/2" - 7"      | 441    |
| 24139    | MYC  | 125  | 3 1/2" - 7"      | 465    |
| 55310    | HYC  | 200  | 3 1/2" - 7 5/8"  | 982    |

Note: Slip type elevators sold without Slips Setting Rings or Guides  
Slips sold with inserts and without setting rings

## SLIPS - GUIDES - INSERTS - SETTING RINGS

| SIZE              | SLIP    | INSERT | NO. | SETTING RING |
|-------------------|---------|--------|-----|--------------|
| 2 1/16" X 1.050'  | 28745-7 | 29370  | 8   | 28735        |
| 2 1/16" X 1.315'  | 28745-2 | 28749  | 8   | 28736        |
| 3 1/16" X 1.660'  | 28745-3 | 28778  | 8   | 28784        |
| 2 1/16" X 1.900'  | 28745-4 | 28775  | 8   | 28783        |
| 2 1/16" X 2.000'  | 28745-5 | 28772  | 8   | 28737        |
| 2 1/16" X 2 1/16' | 28745-6 | 28772  | 8   | 28782        |

| SIZE             | SLIP    | INSERT | NO. | SETTING RING |
|------------------|---------|--------|-----|--------------|
| 2 7/8" X 1.315"  | 29343-7 | 29259  | 8   | 29354        |
| 2 7/8" X 1.660"  | 29343-6 | 29258  | 8   | 29353        |
| 2 7/8" X 1.900"  | 29343-5 | 29257  | 8   | 29352        |
| 2 7/8" X 2.000"  | 29343-4 | 29256  | 8   | 29351        |
| 2 7/8" X 2 1/16" | 29343-3 | 29256  | 8   | 29350        |
| 2 7/8" X 2 3/8"  | 29343-2 | 29255  | 8   | 29345        |
| 2 7/8" X 2 7/8"  | 29343-1 | 24773  | 8   | 29348        |

| SIZE             | SLIP     | INSERT | NO. | SETTING RING |
|------------------|----------|--------|-----|--------------|
| 2 7/8" X 1.315"  | 23108-11 | 29259  | 12  | 29001        |
| 2 7/8" X 1.660"  | 23108-10 | 29258  | 12  | 27810        |
| 2 7/8" X 1.900"  | 23108-9  | 29257  | 12  | 27811        |
| 2 7/8" X 2.000"  | 23108-8  | 29256  | 12  | 27821        |
| 2 7/8" X 2 1/16" | 23108-7  | 29256  | 12  | 27812        |
| 2 7/8" X 2 3/8"  | 23108-6  | 29255  | 12  | 27694        |
| 2 7/8" X 2 7/8"  | 23108-4  | 24773  | 12  | 27695        |
| 3 1/2" X 2 7/8"  | 23108-3  | 30358  | 24  | 27695        |
| 3 1/2" X 3 1/2"  | 23108-5  | 24774  | 24  | 27813        |

| SIZE            | SLIP    | INSERT | NO. | SETTING RING |
|-----------------|---------|--------|-----|--------------|
| 2 7/8" X 2 3/8" | 39259-4 | 29255  | 16  | 39214-1      |
| 2 7/8" X 2 7/8" | 39259-2 | 24773  | 16  | 39214-2      |
| 3 1/2" X 2 7/8" | 39258-4 | 30358  | 32  | 39214-3      |
| 3 1/2" X 3 1/2" | 39258-2 | 24774  | 32  | 39214-4      |

| SIZE            | SLIP    | INSERT | NO. | GUIDE PL. | SETTING RING |
|-----------------|---------|--------|-----|-----------|--------------|
| 4 1/2" X 3 1/2" | 34931   | 24779  | 16  | 26827-1   | 34932        |
| 4 1/2" X 4"     | 26830   | 24781  | 16  | 26827     | 30209        |
| 4 1/2" X 4 1/2" | 24072-5 | 16408  | 16  | 24071-4   | 30219        |
| 5 1/2" X 5"     | 24072-7 | 24783  | 16  | 24071     | 30220        |
| 5 1/2" X 5 1/2" | 24072-2 | 16407  | 16  | 24071-1   | 30223        |
| 7" X 6 5/8"     | 24077-7 | 24748  | 24  | 24071-3   | 30226        |
| 7" X 7"         | 24077-1 | 16407  | 24  | 24071-2   | 30229        |

| SIZE            | SLIP  | INSERT | NO. | GUIDE PL. | SETTING RING |
|-----------------|-------|--------|-----|-----------|--------------|
| 4 1/2" X 3 1/2" | 55509 | 24779  | 24  | 26827-1   | 55516        |
| 4 1/2" X 4"     | 55510 | 24781  | 24  | 26827     | 55517        |
| 4 1/2" X 4 1/2" | 55511 | 16408  | 24  | 24071-4   | 55518        |
| 5 1/2" X 5"     | 55512 | 24783  | 36  | 24071     | 55519        |
| 5 1/2" X 5 1/2" | 55513 | 16407  | 36  | 24071-1   | 55520        |
| 7" X 6 5/8"     | 55514 | 24748  | 48  | 24071-3   | 55521        |
| 7" X 7"         | 55515 | 16407  | 48  | 24071-2   | 55522        |
| 7 5/8" X 7 5/8" | 70009 | 70010  | 48  | 24071-6   | 70012        |



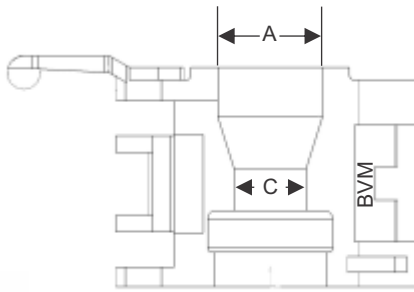
SALES@BVMCORP.COM  
877-975-1402  
303-975-1402  
FAX - 303-975-0981  
INTL - (01)303-975-1402  
WWW.BVMCORP.COM

# ELEVATOR BORE CODES

| DRILL PIPE BORE CODES |            |                              |             |            |
|-----------------------|------------|------------------------------|-------------|------------|
| DRILL PIPE            | TYPE UPSET | TOOL JOINT                   | 18° TAPERED | 90° COLLAR |
| 2 3/8                 | IU         | API REG.                     |             | 109        |
|                       | EU         | NC 26 (IF) WO OH SL H90      | 116         | 110        |
| 2 7/8                 | IU         | API REG. XH                  | 117         | 108        |
|                       | EU         | NC 37 (IF) WO OH SL H90      | 118         | 101        |
| 3 1/2                 | IU         | API REG. FH                  | 119         | 102        |
|                       | EU         | NC 38 (IF) WO OH SL H90      | 120         | 103        |
| 4                     | IU         | NC 40 (FH) H90               | 121         | 104        |
|                       | EU         | NC 46 (IF) WO OH             | 122         | 105        |
| 4 1/2                 | IU         | NC 46 (XH) FH H90            | 122         | 105        |
|                       | EU         | NC 50 (IF) WO OH             | 123         | 106        |
| 5                     | IEU        | NC 50 (XH) 4 1/2 IF 5 1/2 FH | 123         | 106        |
| 5 1/2                 | IEU        | FH                           | 124         | 107        |
|                       | IEU        | IF                           | 678         |            |
| 6 5/8                 | IEU        | FH                           | 740         |            |

| COLLAR TYPE DRILL PIPE |            |               |
|------------------------|------------|---------------|
| BORE CODE              | TOP BORE A | BOTTOM BORE B |
| 101                    | 3 3/8      | 3 1/8         |
| 102                    | 3 13/16    | 3 3/4         |
| 103                    | 4 1/16     | 3 3/4         |
| 104                    | 4 5/16     | 4 1/4         |
| 105                    | 4 13/16    | 4 3/4         |
| 106                    | 5 5/16     | 5 1/4         |
| 107                    | 5 7/8      | 5 13/16       |
| 108                    | 3 1/8      | 3 1/8         |
| 109                    | 2 5/8      | 2 5/8         |
| 110                    | 2 3/4      | 2 3/4         |
| 111                    | 3 1/2      | 3 1/2         |
| 112                    | 3 1/16     | 3 1/16        |
| 113                    | 5 11/16    | 5 11/16       |
| 114                    | 6 1/4      | 6 1/4         |
| 115                    | 2 13/16    | 2 13/16       |

| TUBING            |            |           |            |               |
|-------------------|------------|-----------|------------|---------------|
| TUBING SIZE (IN.) | STYLE      | BORE CODE | TOP BORE A | BOTTOM BORE B |
| 1.050 (3/4)       | PLAIN (NU) | 150       | 1 5/32     | 1 13/32       |
|                   | UPSET (EU) | 151       | 1 13/32    | 1 13/32       |
| 1.315 (1)         | PLAIN (NU) | 152       | 1 13/32    | 1 19/32       |
|                   | UPSET (EU) | 153       | 1 19/32    | 1 19/32       |
| 1.660 (1 1/4)     | PLAIN (NU) | 154       | 1 3/4      | 1 29/32       |
|                   | UPSET (EU) | 155       | 1 29/32    | 1 29/32       |
| 1.900 (1 1/2)     | PLAIN (NU) | 156       | 2          | 2 3/16        |
|                   | UPSET (EU) | 157       | 2 3/16     | 2 3/16        |
| 2 3/8             | PLAIN (NU) | 158       | 2 15/32    | 2 11/32       |
|                   | UPSET (EU) | 159       | 2 23/32    | 2 23/32       |
| 2 7/8             | PLAIN (NU) | 160       | 2 31/32    | 3 1/6         |
|                   | UPSET (EU) | 161       | 3 7/32     | 3 7/32        |
| 3 1/2             | PLAIN (NU) | 162       | 3 19/32    | 3 2732        |
|                   | UPSET (EU) | 163       | 3 27/32    | 3 27/32       |
| 4                 | PLAIN (NU) | 164       | 4 3/32     | 4 11/32       |
|                   | UPSET (EU) | 165       | 4 11/32    | 4 11/32       |
| 4 1/2             | PLAIN (NU) | 166 (129) | 4 19/32    | 4 27/32       |
|                   | UPSET (EU) | 167       | 4 27/32    | 4 27/32       |



## PLAIN DRILL COLLAR WITH LIFT PLUGS

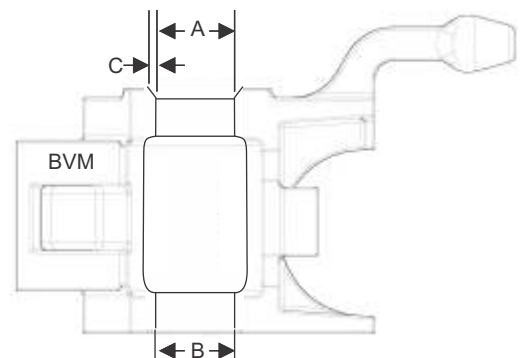
| COLLAR OD (IN.) | BORE CODE | TOP BORE | BEVEL C | BOTTOM BORE B |
|-----------------|-----------|----------|---------|---------------|
| 2 1/2           | 201       | 2 21/32  | 1/16    | 2 21/32       |
| 2 3/4           | 203       | 2 29/32  | 1/16    | 2 29/32       |
| 3               | 205       | 3 5/32   | 1/16    | 3 5/32        |
| 3 1/8           | 206       | 3 9/32   | 1/16    | 3 9/32        |
| 3 1/4           | 207       | 3 13/32  | 1/16    | 3 13/32       |
| 3 1/2           | 209       | 3 21/32  | 1/16    | 3 21/32       |
| 3 3/4           | 211       | 3 29/32  | 1/16    | 3 29/32       |
| 4               | 213       | 4 5/32   | 1/16    | 4 5/32        |
| 4 1/8           | 519       | 4 9/32   | 1/16    | 4 9/32        |
| 4 1/4           | 548       | 4 13/32  | 1/16    | 4 13/32       |
| 4 1/2           | 215       | 4 21/32  | 1/16    | 4 21/32       |
| 4 3/4           | 354       | 4 15/16  | 1/16    | 4 15/16       |
| 5               | 552       | 5 3/16   | 1/16    | 5 3/16        |
| 5 1/4           | 219       | 5 7/16   | 1/16    | 5 7/16        |
| 5 1/2           | 411       | 5 11/16  | 1/16    | 5 11/16       |
| 5 3/4           | 222       | 5 31/32  | 1/16    | 5 31/32       |
| 6               | 349       | 6 7/32   | 1/16    | 6 7/32        |
| 6 1/4           | 348       | 6 15/32  | 1/16    | 6 15/32       |
| 6 3/8           | 331       | 6 19/32  | 1/16    | 6 19/32       |
| 6 1/2           | 135       | 6 23/32  | 1/16    | 6 23/32       |
| 6 3/4           | 338       | 7        | 1/16    | 7             |
| 7               | 372       | 7 1/4    | 1/16    | 7 1/4         |
| 7 1/4           | 335       | 7 1/2    | 1/16    | 7 1/2         |
| 7 1/2           | 137       | 7 3/4    | 1/16    | 7 3/4         |
| 7 3/4           | 550       | 8        | 1/16    | 8             |
| 8               | 334       | 8 1/4    | 1/16    | 8 1/4         |
| 8 1/4           | 347       | 8 1/2    | 1/16    | 8 1/2         |
| 8 1/2           | 580       | 8 25/32  | 1/16    | 8 25/32       |
| 8 3/4           | 226       | 9 1/32   | 1/16    | 9 1/32        |
| 9               | 356       | 9 9/32   | 1/16    | 9 9/32        |
| 9 1/4           | 227       | 9 17/32  | 1/16    | 9 17/32       |
| 9 1/2           | 346       | 9 25/32  | 1/16    | 9 25/32       |
| 10              | 228       | 10 11/32 | 1/16    | 10 11/32      |
| 10 1/2          | 229       | 10 27/32 | 1/16    | 10 27/32      |
| 11              | 230       | 10 11/32 | 1/16    | 10 11/32      |

## DRILL COLLAR WITH ZIP LIFT RECESS

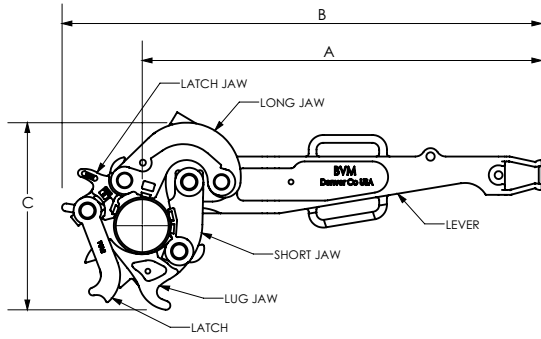
| COLLAR OD (IN.) | BORE CODE | TOP BORE | BEVEL C | BOTTOM BORE B |
|-----------------|-----------|----------|---------|---------------|
| 4 1/8           | 117       | 3 13/16  | 1/16    | 4 1/4         |
| 4 3/4           | 435       | 4 3/8    | 1/16    | 4 7/8         |
| 5 1/4           | 179       | 4 7/8    | 1/16    | 5 3/8         |
| 5 1/2           | 180       | 5 1/8    | 1/16    | 5 3/8         |
| 5 3/4           | 181       | 5 1/4    | 1/16    | 5 7/8         |
| 6               | 362       | 5 1/2    | 1/16    | 6 1/8         |
| 6 1/4           | 337       | 5 3/4    | 1/16    | 6 3/8         |
| 6 1/2           | 373       | 6        | 1/16    | 6 5/8         |
| 6 3/4           | 387       | 6 3/16   | 3/32    | 6 7/8         |
| 7               | 361       | 6 7/16   | 3/32    | 7 1/8         |
| 7 1/4           | 357       | 6 11/16  | 3/32    | 7 3/8         |
| 7 1/2           | 188       | 6 15/16  | 3/32    | 7 5/8         |
| 7 3/4           | 339       | 7 3/16   | 3/32    | 7 7/8         |
| 8               | 336       | 7 7/16   | 3/32    | 8 1/8         |
| 8 1/4           | 422       | 7 11/16  | 3/32    | 8 3/8         |
| 8 1/2           | 426       | 7 15/16  | 3/33    | 8 5/8         |
| 9               | 427       | 8 3/8    | 1/8     | 9 1/8         |
| 9 1/2           | 370       | 8 7/8    | 1/9     | 9 5/8         |
| 9 3/4           | 367       | 9 1/8    | 1/8     | 9 7/8         |
| 10              | 195       | 9 3/8    | 1/8     | 10 1/8        |
| 10 3/4          | 527       | 10 1/8   | 1/8     | 10 7/8        |
| 11              | 419       | 10 3/8   | 1/8     | 11 1/8        |
| 11 1/4          | 196       | 10 5/8   | 1/8     | 11 3/8        |

## CASING

| CASING SIZE (IN.) | BORE CODE | TOP BORE A | BOTTOM BORE B |
|-------------------|-----------|------------|---------------|
| 4 1/2             | 129       | 4 19/32    | 4 27/32       |
| 4 3/4             | 130       | 4 27/32    | 4 27/32       |
| 5                 | 131       | 5 3/32     | 5 3/32        |
| 5 1/2             | 132       | 5 5/8      | 5 5/8         |
| 5 3/4             | 133       | 5 7/8      | 5 7/8         |
| 6                 | 134       | 6 1/8      | 6 1/8         |
| 6 5/8             | 135       | 6 3/4      | 6 3/4         |
| 7                 | 136       | 7 1/8      | 7 1/8         |
| 7 5/8             | 137       | 7 3/4      | 7 3/4         |
| 8 5/8             | 139       | 8 25/32    | 8 25/32       |
| 9                 | 140       | 9 5/32     | 9 5/32        |
| 9 5/8             | 141       | 9 25/32    | 9 25/32       |
| 9 7/8             | 649       | 10 1/32    | 10 1/32       |
| 10 3/4            | 142       | 10 29/32   | 10 29/32      |
| 11 3/4            | 143       | 11 15/16   | 11 15/16      |
| 12 3/4            | 850       | 12 15/16   | 13 15/16      |
| 13 3/8            | 144       | 13 9/16    | 13 9/16       |
| 16                | 145       | 16 7/32    | 16 7/32       |
| 18 5/8            | 146       | 18 7/8     | 18 7/8        |
| 20                | 147       | 20 1/4     | 20 1/4        |
| 21 1/2            | 148       | 21 25/32   | 21 25/32      |
| 22                | 688       | 22 9/32    | 22 9/32       |
| 24                | 630       | 24 5/16    | 24 5/16       |
| 24 1/2            | 149       | 24 13/16   | 24 13/16      |
| 26                | 650       | 26 11/32   | 26 11/32      |
| 28                | 690       | 28 11/32   | 28 11/32      |
| 30                | 644       | 30 3/8     | 30 3/8        |
| 36                | 660       | 36 7/16    | 37 7/16       |



# MANUAL TONGS



## BVM TYPE C MANUAL TONG Max. 35,000 FT/LB 2 3/8" - 10 3/4"

| PART NO. | DESCRIPTION                          | SIZE             | WEIGHT |
|----------|--------------------------------------|------------------|--------|
| 75117-L  | C TONG WITH STD LEVER, LESS LUG JAWS |                  | 276    |
| 75117-S  | C TONG WITH 36" LEVER, LESS LUG JAWS |                  | 266    |
| 75728-1  | LUG JAW 15,000 ft lb                 | 2 3/8" - 3.668"  | 33     |
| 75939-4  | LUG JAW 25,000 ft lb                 | 3 1/2" - 5 1/4"  | 44     |
| 75940-2  | LUG JAW 35,000 ft lb                 | 5 1/4" - 7"      | 46     |
| 75701-1  | LUG JAW 25,000 ft lb                 | 7" - 8 5/8"      | 58     |
| 75703-1  | LUG JAW 35,000 ft lb                 | 9 5/8" - 10 3/4" | 80     |
| 75943-1  | LUG JAW 25,000 ft lb (OPTIONAL)      | 4 1/2" - 6 1/2"  | 42     |
| 75727-1  | LUG JAW 15,000 ft lb (OPTIONAL)      | 2 7/8" - 4 1/4"  | 30     |

## BVM TYPE B MANUAL TONG Max. 55,000 FT/LB 3 1/2" - 13 3/8"

| PART NO. | DESCRIPTION                          | SIZE            | WEIGHT |
|----------|--------------------------------------|-----------------|--------|
| 67114    | B TONG WITH 48" LEVER, LESS LUG JAWS |                 | 518    |
| 67114-1  | B TONG WITH 36" LEVER, LESS LUG JAWS |                 | 467    |
| 67765-1  | LUG JAW 35,000 ft lb                 | 3 1/2" - 5"     | 30     |
| 67622-1  | LUG JAW 55,000 ft lb                 | 5" - 6 3/4"     | 37     |
| 67195-1  | LUG JAW 55,000 ft lb                 | 6 5/8" - 9"     | 43     |
| 67297-1  | LUG JAW 40,000 ft lb                 | 9" - 10 3/4"    | 60     |
| 67285-1  | LUG JAW 30,000 ft lb                 | 11 3/4"         | 62     |
| 67592-1  | LUG JAW 30,000 ft lb                 | 13 3/8"         | 72     |
| 67927-1  | LUG JAW 55,000 ft lb (OPTIONAL)      | 4" - 5 1/2"     | 32     |
| 67196-1  | LUG JAW 55,000 ft lb (OPTIONAL)      | 4 1/4" - 6 3/4" | 43     |
| 67569-1  | LUG JAW 30,000 ft lb (OPTIONAL)      | 12 3/4" - 13"   | 73     |

CASING HEADS SOLD COMPLETE LESS LEVER AND HANGER

## BVM TYPE B CASING TONG 25,000 FT/LB 13 3/8" - 14 1/2"

| PART NO.  | DESCRIPTION        | SIZE          | WEIGHT |
|-----------|--------------------|---------------|--------|
| 69100-100 | CASING HEAD        |               | 340    |
| 69100-110 | CASING HEAD        |               | 352    |
| 69100-120 | CASING HEAD        | 16" - 17 1/2" | 373    |
| 69100-130 | CASING HEAD        | 17 1/2" - 19" | 385    |
| 69100-140 | CASING HEAD        | 19" - 20"     | 312    |
| 69100-150 | CASING HEAD        | 20" - 21 1/2" | 418    |
| 69100-160 | CASING HEAD        | 21 1/2" - 23" | 430    |
| 69100-170 | CASING HEAD        | 24" - 25 1/2" | 565    |
| 69100-175 | CASING HEAD        | 25 1/2" - 27" | 485    |
| 69100-180 | CASING HEAD        | 30 1/2"       | 540    |
| 69100-190 | CASING HEAD        | 36 1/2"       | 615    |
| 67264-1   | HANGER ASSEMBLY    |               | 49     |
| 67265-1   | LEVER ASSEMBLY STD |               | 155    |
| 67265-2   | LEVER ASSEMBLY 36" |               | 136    |

## BVM TYPE DB CASING TONG Max. 65,000 FT/LB 3 1/2" - 17"

| PART NO. | DESCRIPTION                                   | SIZE              | WEIGHT |
|----------|---|-------------------|--------|
| 45801-1  | DB TONG WITH LEVER, LESS LUG JAWS             |                   | 443    |
| 45718-1  | LUG JAW 65,000 ft lb                          | 3 1/2" - 8 1/4"   | 88     |
| 45719-1  | LUG JAW 65,000 ft lb                          | 8" - 11 1/4"      | 112    |
| 45720-1  | LUG JAW 40,000 ft lb                          | 11 3/4" - 14 3/8" | 78     |
| 45721-1  | LUG JAW 40,000 ft lb                          | 16" - 17"         | 96     |
| 45722    | HINGE JAW - REQ. FOR SIZES LARGER THAN 8 1/2" |                   | 54     |
| 45728    | SAFETY HANDLES - SET OF 2 FOR 1 HANDLE        |                   | 6      |

## BVM TYPE MS TONG Max. 6,500 FT/LB 1.9" - 6 1/8"

| PART NO. | DESCRIPTION                     | SIZE            | WEIGHT |
|----------|---------------------------------|-----------------|--------|
| 40423    | MS TONG WITH LEVER, LESS JAWS   | 1.9" - 4 1/2"   | 27     |
| 40427    | MS TONG WITH LEVER, LESS JAWS   | 4 1/2" - 6 1/8" | 27     |
| 40436-1  | LUG JAW                         | 1.9" - 2 1/16"  | 2      |
| 40437-1  | LUG JAW                         | 2 3/8" - 3.668" | 4.5    |
| 40438-1  | LUG JAW                         | 3 1/2" - 4 1/2" | 4.5    |
| 40439-1  | LUG JAW                         | 4 1/2" - 5 1/4" | 4.5    |
| 40441-1  | LUG JAW                         | 5 1/4" - 6 1/8" | 5      |
| 40442    | SHORT JAW - USED THIS SIZE ONLY | 4 1/2" - 6 1/8" | 3      |
| 40443    | LATCH JAW - USED THIS SIZE ONLY | 4 1/2" - 6 1/8" | 3      |

## BVM TYPE LF TONG Max. 14,000 FT/LB 2 3/8" - 8 5/8"

| PART NO. | DESCRIPTION                       | SIZE            | WEIGHT |
|----------|-----------------------------------|-----------------|--------|
| 80121    | LF TONG WITH LEVER, LESS LUG JAWS |                 | 52     |
| 80911    | LUG JAW 10,000 ft lb              | 2 3/8" - 3 1/2" | 12     |
| 80912    | LUG JAW 10,000 ft lb              | 3 1/2" - 5 3/8" | 15     |
| 80913    | LUG JAW 14,000 ft lb              | 4 3/4" - 6 1/4" | 24     |
| 80930    | LUG JAW 12,000 ft lb              | 5 3/4" - 7 1/4" | 35     |
| 80931-1  | LUG JAW ASSEMBLY 10,000 ft lb     | 8 5/8"          | 56     |

## BVM TYPE AAX TONG Max. 55,000 FT/LB 2 3/8" - 13 3/8"

| PART NO. | DESCRIPTION                            | SIZE              | WEIGHT |
|----------|--|-------------------|--------|
| 1300-1   | AAX TONG WITH 48" LEVER, LESS LUG JAWS |                   | 394    |
| 1300-2   | AAX TONG WITH 42" LEVER, LESS LUG JAWS |                   | 387    |
| 1300-3   | AAX TONG WITH 36" LEVER, LESS LUG JAWS |                   | 367    |
| 1370     | LUG JAW 40,000 ft lb                   | 2 7/8" - 3 3/4"   | 33     |
| 1371     | LUG JAW 40,000 ft lb                   | 3 1/2" - 4 1/2"   | 38     |
| 1372     | LUG JAW 55,000 ft lb                   | 4" - 5 1/4"       | 40     |
| 1373     | LUG JAW 55,000 ft lb                   | 5" - 7 1/4"       | 44     |
| 1374     | LUG JAW 55,000 ft lb                   | 6 7/8" - 8 5/8"   | 55     |
| 1375     | LUG JAW 30,000 ft lb                   | 9" - 10 3/4"      | 64     |
| 1376     | LUG JAW 30,000 ft lb                   | 10 3/4" - 11 3/4" | 68     |
| 1377     | LUG JAW 30,000 ft lb                   | 13 3/8"           | 90     |

## BVM TYPE H TONG Max. 80,000 FT/LB 3 1/2" - 13 3/8"

| PART NO. | DESCRIPTION                          | SIZE              | WEIGHT |
|----------|--------------------------------------|-------------------|--------|
| 1800     | H TONG WITH 48" LEVER, LESS LUG JAWS |                   | 510    |
| 1871     | LUG JAW                              | 3 1/2" - 4 1/2"   | 34     |
| 1872     | LUG JAW                              | 4" - 5 1/4"       | 48     |
| 1873     | LUG JAW                              | 5" - 6"           | 66     |
| 1874     | LUG JAW                              | 6" - 7"           | 82     |
| 1875     | LUG JAW                              | 7" - 9"           | 72     |
| 1876     | LUG JAW                              | 9" - 10 3/4"      | 100    |
| 1877     | LUG JAW                              | 10 3/4" - 11 3/4" | 96     |
| 1878     | LUG JAW                              | 13 3/8"           | 108    |

## BVM TYPE SDD TONG Max. 100,000 FT/LB 4" - 17"

| PART NO. | DESCRIPTION                                | SIZE         | WEIGHT |
|----------|--|--------------|--------|
| 55701-1  | SDD TONG WITH 48" LEVER, LESS LUG JAWS     |              | 690    |
| 55702-1  | LUG JAW 100,000 ft lb                      | 4" - 8 1/2"  | 138    |
| 55703-1  | LUG JAW 100,000 ft lb                      | 8 1/2" - 12" | 96     |
| 55704-1  | LUG JAW 75,000 ft lb                       | 12" - 15"    | 135    |
| 55705-1  | LUG JAW 60,000 ft lb                       | 15 3/4"      | 156    |
| 55706-1  | LUG JAW 60,000 ft lb                       | 16" - 17"    | 120    |
| 55707    | HINGE JAW REQUIRED - SIZES 8 1/2" & LARGER |              | 98     |



SALES@BVMCORP.COM  
 877-975-1402  
 303-975-1402  
 FAX - 303-975-0981  
 INTL - (01)303-975-1402  
 WWW.BVMCORP.COM

# MANUAL SLIPS

## ROTARY SLIPS COMPLETE

| BODY   | API<br>PIPE<br>SIZE<br>O.D.<br>INCH | SDS<br>PART # | INSERTS | WEIGHT | SDML<br>PART # | INSERTS | WEIGHT | SDXL<br>PART# | INSERTS | WEIGHT |
|--------|-------------------------------------|---------------|---------|--------|----------------|---------|--------|---------------|---------|--------|
| 3 1/2" | 2 3/8"                              | 3901          | 2160-24 | 181    | 15524          | 2160-30 | 193    |               |         |        |
| 3 1/2" | 2 7/8"                              | 3903          | 2161-24 | 181    | 15523          | 2161-30 | 188    |               |         |        |
| 3 1/2" | 3 1/2"                              | 3905          | 2162-24 | 181    | 15522          | 2162-30 | 181    |               |         |        |
| 4 1/2" | 3 1/2"                              | 3907          | 2163-36 | 162    | 15563          | 2163-45 | 207    | 15515         | 2163-54 | 273    |
| 4 1/2" | 4"                                  | 3909          | 2164-36 | 155    | 15564          | 2164-45 | 199    | 15514         | 2164-54 | 257    |
| 4 1/2" | 4 1/2"                              | 3911          | 2165-36 | 146    | 15565          | 2165-45 | 188    | 15513         | 2165-54 | 254    |
| 5"     | 4"                                  |               |         |        | 15567          | 2168-45 | 204    | 15518         | 2168-54 | 237    |
| 5"     | 4 1/2"                              |               |         |        | 15568          | 2166-45 | 196    | 15517         | 2166-54 | 227    |
| 5"     | 5"                                  |               |         |        | 15569          | 2167-45 | 185    | 15516         | 2167-54 | 225    |
| 5 1/2" | 4 1/2"                              |               |         |        | 15571          | 2168-45 | 200    | 15521         | 2168-54 | 234    |
| 5 1/2" | 5"                                  |               |         |        | 15572          | 2169-45 | 192    | 15520         | 2169-54 | 224    |
| 5 1/2" | 5 1/2"                              |               |         |        | 15573          | 2170-45 | 181    | 15519         | 2170-54 | 210    |
| 7"     | 5 3/4"                              |               |         |        |                |         |        | 86719-1       | 2521-72 | 272    |
| 7"     | 5 7/8"                              |               |         |        |                |         |        | 86722-1       | 2656-72 | 262    |
| 7"     | 6"                                  |               |         |        |                |         |        | 86719-2       | 2632-60 | 252    |
| 7"     | 6 5/8"                              |               |         |        |                |         |        | 86720         | 2172-72 | 242    |
| 7"     | 7"                                  |               |         |        |                |         |        | 86719         | 2173-72 | 243    |



## CASING SLIPS CMSXL

| PART NO. | 3" TAPER | SIZE    | SEGMENTS | WEIGHT | CIRCULAR<br>BUTTONS |
|----------|----------|---------|----------|--------|---------------------|
| 98700    |          | 5 1/2"  | 11       | 174    | 2619-132            |
| 98701    |          | 6 5/8"  | 12       | 200    | 2628-144            |
| 98702    |          | 7"      | 12       | 184    | 2619-144            |
| 98703    |          | 7 5/8"  | 12       | 184    | 2630-144            |
| 98704    |          | 8 5/8"  | 13       | 181    | 2630-156            |
| 98705    | 98505    | 9 5/8"  | 14       | 192    | 2630-168            |
| 98706    | 98506    | 10 3/4" | 15       | 252    | 2630-180            |
| 98707    | 98507    | 11 3/4" | 17       | 265    | 2627-204            |
| 98708    | 98508    | 13 3/8" | 18       | 278    | 2630-216            |
| 98709    | 98509    | 16"     | 21       | 317    | 2631-252            |
| 98720    | 98520    | 18 5/8" | 25       | 369    | 2626-300            |
| 98721    | 98521    | 20"     | 26       | 382    | 2631-312            |
| 98722    | 98522    | 24"     | 30       | 443    | 2631-360            |
| 98723    | 98523    | 26"     | 33       | 486    | 2631-396            |
| 98724    | 98524    | 30"     | 37       | 536    | 2631-444            |
| 98725    | 98525    | 36"     | 44       | 637    | 2631-528            |



## CONDUCTOR PIPE SLIPS CPS

| 4" TAPER<br>PART NO. | 3" TAPER<br>PART NO. | SIZE | SEGMENTS/<br>SPACERS | WEIGHT | CIRCULAR<br>BUTTONS |
|----------------------|----------------------|------|----------------------|--------|---------------------|
| 99725                | 99525                | 24"  | 13/12                | 276    | 2631-156            |
| 99726                | 99526                | 26"  | 14/14                | 296    | 2631-168            |
| 99727                | 99527                | 30"  | 16/15                | 319    | 2631-193            |



## CASING SLIPS UC-3 3" TAPER

| PART #    | SIZE    | SEGMENTS | WEIGHT | SLIP        |
|-----------|---------|----------|--------|-------------|
| 7704-5025 | 13 3/8" | 12       | 195    | 7704-A-38   |
| 7704-5036 | 16"     | 14       | 226    | 7704-A-45   |
| 7704-5035 | 18 5/8" | 17       | 283    | 7704-A-5000 |
| 7704-5034 | 20"     | 17       | 325    | 7704-A-99   |
| 7704-5001 | 24"     | 19       | 312    | 7704-A-99   |
| 7704-5006 | 26"     | 21       | 325    | 7704-A-100  |
| 7704-5005 | 30"     | 24       | 367    | 7704-A-100  |
| 7704-5007 | 36"     | 28       | 437    | 7704-A-100  |

## DRILL COLLAR SLIP - TYPE DCS

| PART # | TYPE  | SIZE             | SEGMENTS | WEIGHT | CIRCULAR<br>BUTTONS |
|--------|-------|------------------|----------|--------|---------------------|
| 2572   | DCS-S | 3" - 4"          | 7        | 112    | 2628-49             |
| 2573   | DCS-S | 4" - 4 7/8"      | 7        | 109    | 2620-49             |
| 2552   | DCS-R | 4 1/2" - 6"      | 9        | 120    | 2628-63             |
| 2550   | DCS-R | 5 1/2" - 7"      | 9        | 112    | 2620-63             |
| 2501   | DCS-L | 5 1/2" - 7"      | 11       | 154    | 2513-88             |
| 2503   | DCS-L | 6 3/4" - 8 1/4"  | 11       | 151    | 2630-88             |
| 2507   | DCS-L | 8" - 9 1/2"      | 12       | 173    | 2630-96             |
| 2530   | DCS-L | 8 1/2" - 10"     | 13       | 185    | 2627-104            |
| 2508   | DCS-L | 9 1/4" - 11 1/4" | 14       | 198    | 2630-112            |
| 2534   | DCS-L | 11" - 12 3/4"    | 17       | 213    | 2625-136            |
| 2536   | DCS-L | 12" - 14"        | 17       | 207    | 2630-136            |



SALES@BVMCORN.COM  
877-975-1402  
303-975-1402  
FAX - 303-975-0981  
INTL - (01)303-975-1402  
WWW.BVMCORN.COM

# SAFETY CLAMPS



| TYPE T - COMPLETE WITH WRENCH, LESS BOX |                 |              |       |        |
|---|-----------------|--------------|-------|--------|
| PART NO.                                | COLLAR SIZE     | DESCRIPTION  | LINKS | WEIGHT |
| 88000                                   | 1 1/8" - 2"     |              | 4     | 36     |
| 88001                                   | 2 1/8" - 3 1/4" |              | 5     | 40     |
| 88002                                   | 3 1/4" - 4 1/2" |              | 6     | 42     |
| 99612-T                                 |                 | BOX - TYPE T |       | 42     |



| TYPE CS - COMPLETE WITH WRENCH, LESS BOX |                  |                 |       |        |
|--|------------------|-----------------|-------|--------|
| PART NO.                                 | COLLAR SIZE      | DESCRIPTION     | LINKS | WEIGHT |
| CS99500                                  | 3 3/4" - 4 5/8"  |                 | 7     | 58     |
| CS99501                                  | 4 1/2" - 5 5/8"  |                 | 8     | 64     |
| CS99502                                  | 5 1/2" - 6 5/8"  |                 | 9     | 70     |
| CS99503                                  | 6 1/2" - 7 5/8"  |                 | 10    | 76     |
| CS99504                                  | 7 1/2" - 8 5/8"  |                 | 11    | 81     |
| CS99505                                  | 8 1/2" - 9 5/8"  |                 | 12    | 86     |
| CS99506                                  | 9 1/2" - 10 5/8" |                 | 13    | 91     |
| 99612-C                                  |                  | BOX C - S AND M |       | 42     |

| TYPE CM - COMPLETE WITH WRENCH, LESS BOX |                   |                 |       |        |
|--|-------------------|-----------------|-------|--------|
| PART NO.                                 | COLLAR SIZE       | DESCRIPTION     | LINKS | WEIGHT |
| CM99507                                  | 10 1/2" - 11 5/8" |                 | 14    | 95     |
| CM99508                                  | 11 1/2" - 12 5/8" |                 | 15    | 100    |
| CM99509                                  | 12 1/2" - 13 5/8" |                 | 16    | 104    |
| CM99510                                  | 13 1/2" - 14 5/8" |                 | 17    | 108    |
| CM99511                                  | 14 1/2" - 15 5/8" |                 | 18    | 113    |
| 99612-C                                  |                   | BOX C - S AND M |       | 42     |

| TYPE CL - COMPLETE WITH WRENCH, LESS BOX |               |              |       |        |
|--|---------------|--------------|-------|--------|
| PART NO.                                 | COLLAR SIZE   | DESCRIPTION  | LINKS | WEIGHT |
| CL99512                                  | 15 1/2" - 18" | DOUBLE SCREW | 18    | 140    |
| CL99513                                  | 16 1/2" - 19" | DOUBLE SCREW | 19    | 146    |
| CL99514                                  | 17 1/2" - 20" | DOUBLE SCREW | 20    | 152    |
| CL99515                                  | 18 1/2" - 21" | DOUBLE SCREW | 21    | 156    |
| CL99516                                  | 19 1/2" - 22" | DOUBLE SCREW | 22    | 161    |
| CL99517                                  | 20 1/2" - 23" | DOUBLE SCREW | 24    | 196    |
| CL99518                                  | 24 1/2" - 27" | DOUBLE SCREW | 27    | 225    |
| CL99519                                  | 29 1/2" - 32" | DOUBLE SCREW | 32    | 229    |
| CL99525                                  | 35 1/2" - 38" | DOUBLE SCREW | 38    | 234    |
| CL99526                                  | 41 1/2" - 44" | DOUBLE SCREW | 44    | 214    |



| TYPE MP-S - COMPLETE WITH WRENCH, LESS BOX |                 |             |              |        |
|--|-----------------|-------------|--------------|--------|
| PART NO.                                   | COLLAR SIZE     | DESCRIPTION | LINKS / DIES | WEIGHT |
| 33030                                      | 2 7/8" - 4 1/8" |             | 7 / 8        | 83     |
| 33031                                      | 4" - 5"         |             | 8 / 9        | 91     |
| 3331                                       |                 | BOX         |              | 42     |

| TYPE MP-R - COMPLETE WITH WRENCH, LESS BOX |                  |             |              |        |
|--|------------------|-------------|--------------|--------|
| PART NO.                                   | COLLAR SIZE      | DESCRIPTION | LINKS / DIES | WEIGHT |
| 33011                                      | 4 1/2" - 5 5/8"  |             | 7 / 8        | 81     |
| 33012                                      | 5 1/2" - 7"      |             | 8 / 9        | 89     |
| 33013                                      | 6 3/4" - 8 1/4"  |             | 9 / 10       | 97     |
| 33014                                      | 8" - 9 1/4"      |             | 10 / 11      | 105    |
| 33015                                      | 9 1/4" - 10 1/2" |             | 11 / 12      | 113    |
| 3331                                       |                  | BOX         |              | 42     |

| TYPE MP-M - COMPLETE WITH WRENCH, LESS BOX |                   |             |              |        |
|--|-------------------|-------------|--------------|--------|
| PART NO.                                   | COLLAR SIZE       | DESCRIPTION | LINKS / DIES | WEIGHT |
| 33016                                      | 10 1/2" - 11 1/2" |             | 12 / 13      | 121    |
| 33017                                      | 11 1/2" - 12 1/2" |             | 13 / 14      | 129    |
| 33018                                      | 12 1/2" - 13 5/8" |             | 14 / 15      | 137    |
| 33019                                      | 13 5/8" - 14 3/4" |             | 15 / 16      | 145    |
| 33020                                      | 14 3/4" - 15 7/8" |             | 16 / 17      | 153    |
| 3331                                       |                   | BOX         |              | 42     |

| TYPE MP-L - COMPLETE WITH WRENCH, LESS BOX |                   |             |              |        |
|--|-------------------|-------------|--------------|--------|
| PART NO.                                   | COLLAR SIZE       | DESCRIPTION | LINKS / DIES | WEIGHT |
| 33021                                      | 15 7/8" - 17"     |             | 17 / 18      | 173    |
| 33022                                      | 17" - 18 1/2"     |             | 18 / 19      | 181    |
| 33023                                      | 18 1/8" - 19 3/8" |             | 19 / 20      | 189    |
| 3331                                       |                   | BOX         |              | 42     |

| TYPE MP-L - COMPLETE WITH WRENCH, LESS BOX |                   |              |              |        |
|--|-------------------|--------------|--------------|--------|
| PART NO.                                   | COLLAR SIZE       | DESCRIPTION  | LINKS / DIES | WEIGHT |
| 33024                                      | 19 3/8" - 20 3/8" | DOUBLE SCREW | 16 / 20      | 196    |
| 33025                                      | 20 3/8" - 21 1/2" | DOUBLE SCREW | 17 / 21      | 204    |
| 33032                                      | 21" - 22 5/8"     | DOUBLE SCREW | 18 / 22      | 212    |
| 33033                                      | 22 5/8" - 23 3/4" | DOUBLE SCREW | 19 / 23      | 220    |
| 33034                                      | 23 3/4" - 24 7/8" | DOUBLE SCREW | 20 / 24      | 228    |
| 33035                                      | 24 7/8" - 26"     | DOUBLE SCREW | 21 / 25      | 236    |
| 33036                                      | 26" - 27 1/8"     | DOUBLE SCREW | 22 / 26      | 244    |
| 33039                                      | 29 3/8" - 30 1/2" | DOUBLE SCREW | 24 / 28      | 260    |
| 33044                                      | 35" - 36 1/8"     | DOUBLE SCREW | 29 / 33      | 300    |



SALES@BVMCORP.COM  
 877-975-1402  
 303-975-1402  
 FAX - 303-975-0981  
 INTL - (01)303-975-1402  
 WWW.BVMCORP.COM

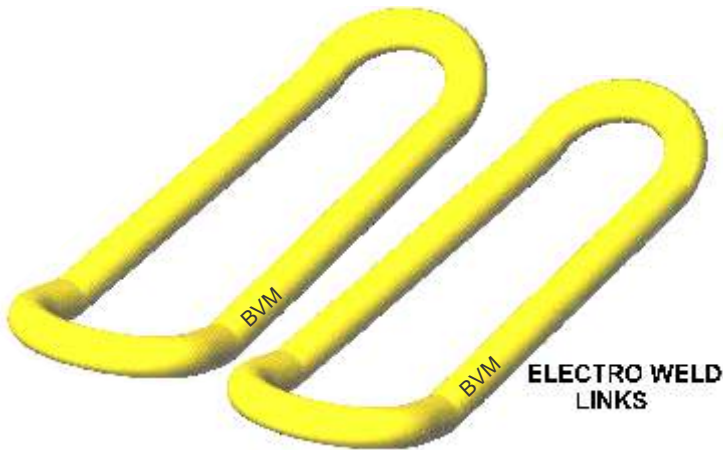


# ELEVATOR LINKS (BAILS)

## WORK OVER LINKS

| PART NO. | SIZE - LENGTH | RATED<br>CAP. TONS | WEIGHT<br>PER SET |
|----------|---------------|--------------------|-------------------|
| 17536    | 1 3/4" - 36"  | 150                | 125               |
| 17548    | 1 3/4" - 48"  | 150                | 216               |
| 17560    | 1 3/4" - 60"  | 150                | 390               |
| 17572    | 1 3/4" - 72"  | 150                | 324               |
| 17584    | 1 3/4" - 84"  | 150                | 420               |
| 17596    | 1 3/4" - 96"  | 150                | 310               |
| 178108   | 1 3/4" - 108" | 150                | 350               |
| 175120   | 1 3/4" - 120" | 150                | 390               |

OTHER SIZES AVAILABLE



## ELECTRO WELD LINKS

| PART NO. | SIZE - LENGTH | RATED<br>CAP. TONS | WEIGHT<br>PER SET |
|----------|---------------|--------------------|-------------------|
| 87518    | 7/8" - 18"    | 20                 | 15                |
| 87524    | 7/8" - 24"    | 20                 | 20                |
| 12526    | 1 1/4" - 26"  | 50                 | 41                |
| 12530    | 1 1/4" - 30"  | 50                 | 47                |
| 12536    | 1 1/4" - 36"  | 50                 | 53                |
| 12540    | 1 1/4" - 40"  | 50                 | 68                |
| 12548    | 1 1/4" - 48"  | 50                 | 73                |
| 12560    | 1 1/4" - 60"  | 50                 | 94                |
| 12572    | 1 1/4" - 72"  | 50                 | 118               |
| 18030    | 1 3/4" - 30"  | 80                 | 155               |
| 18036    | 1 3/4" - 36"  | 80                 | 170               |
| 18042    | 1 3/4" - 42"  | 80                 | 180               |
| 18048    | 1 3/4" - 48"  | 80                 | 190               |
| 18060    | 1 3/4" - 60"  | 80                 | 180               |
| 18072    | 1 3/4" - 72"  | 80                 | 230               |
| 18084    | 1 3/4" - 84"  | 80                 | 260               |
| 20042    | 2" - 42"      | 100                | 180               |
| 20048    | 2" - 48"      | 100                | 200               |
| 20060    | 2" - 60"      | 100                | 240               |
| 20072    | 2" - 72"      | 100                | 280               |
| 20084    | 2" - 84"      | 100                | 320               |
| 20096    | 2" - 96"      | 100                | 360               |

## LINKS - BIG EYE

| PART NO.  | SIZE - LENGTH | RATED<br>CAP. TONS | WEIGHT<br>PER SET |
|-----------|---------------|--------------------|-------------------|
| 22560-BE  | 2 1/4" - 60"  | 250                | 480               |
| 22572-BE  | 2 1/4" - 72"  | 250                | 530               |
| 22584-BE  | 2 1/4" - 84"  | 250                | 580               |
| 22596-BE  | 2 1/4" - 96"  | 250                | 630               |
| 225108-BE | 2 1/4" - 108" | 250                | 870               |
| 225120-BE | 2 1/4" - 120" | 250                | 745               |
| 225132-BE | 2 1/4" - 132" | 250                | 792               |
| 225144-BE | 2 1/4" - 144" | 250                | 875               |
| 27560-BE  | 2 3/4" - 60"  | 350                | 620               |
| 27572-BE  | 2 3/4" - 72"  | 350                | 685               |
| 27584-BE  | 2 3/4" - 84"  | 350                | 740               |
| 27596-BE  | 2 3/4" - 96"  | 350                | 805               |
| 275108-BE | 2 3/4" - 108" | 350                | 870               |
| 275120-BE | 2 3/4" - 120" | 350                | 935               |
| 275132-BE | 2 3/4" - 132" | 350                | 1000              |
| 275150-BE | 2 3/4" - 150" | 350                | 1095              |
| 275168-BE | 2 3/4" - 168" | 350                | 1190              |
| 275180-BE | 2 3/4" - 180" | 350                | 1278              |
| 275192-BE | 2 3/4" - 192" | 350                | 1340              |
| 275216-BE | 2 3/4" - 216" | 350                | 1450              |
| 275240-BE | 2 3/4" - 240" | 350                | 1580              |
| 350108    | 3 1/2" - 108" | 500                | 1450              |
| 350132    | 3 1/2" - 132" | 500                | 1670              |
| 350144    | 3 1/2" - 144" | 500                | 1780              |
| 350160    | 3 1/2" - 160" | 500                | 1927              |
| 350168    | 3 1/2" - 168" | 500                | 2000              |
| 350180    | 3 1/2" - 180" | 500                | 2110              |
| 350192    | 3 1/2" - 192" | 500                | 2202              |
| 350264    | 3 1/2" - 264" | 500                | 2882              |



SALES@BVMCORN.COM  
 877-975-1402  
 303-975-1402  
 FAX - 303-975-0981  
 INTL - (01)303-975-1402  
 WWW.BVMCORN.COM

ALL ELEVATOR LINKS ARE LOAD TESTED TO 150% OF RATED LOAD AND ARE CERTIFIED BY BVM TO API 8C SPECIFICATIONS AND STANDARDS

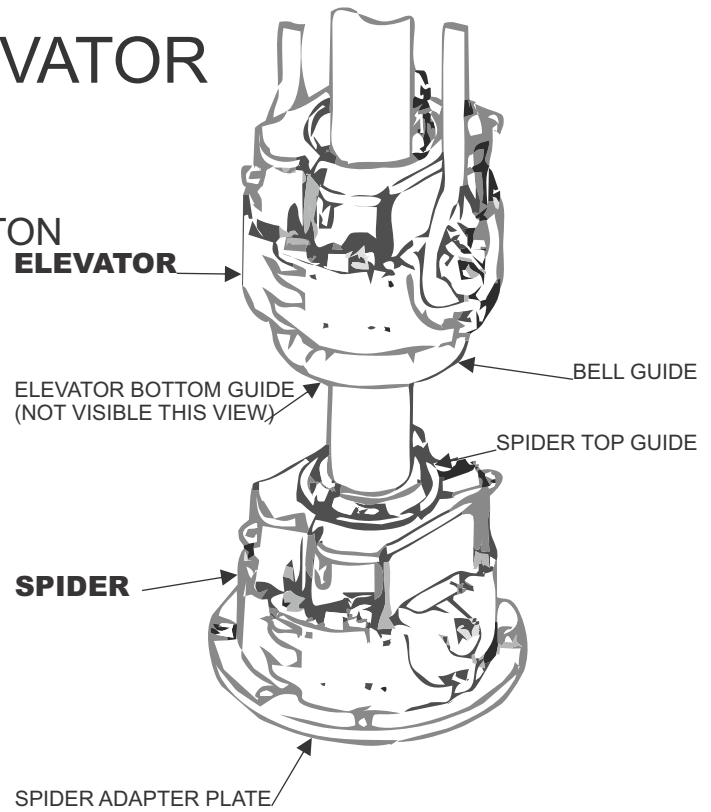
# CASING SPIDER - ELEVATOR

## BVM CASING SPIDER / ELEVATOR

SIZED FROM 2 3/8" TO 24 1/2"

200 TON - 250 TON - 350 TON - 500 TON - 750 TON

| 200 / 250 TON CAPACITY 2 3/8" TO 7 5/8" |  |                       |                  |          |             |
|---|--|-----------------------|------------------|----------|-------------|
| 79200                                   | ELEVATOR / SPIDER [MANUAL] LESS SLIPS AND GUIDES     |                       |                  |          |             |
| 79200P                                  | ELEVATOR / SPIDER [AIR/MANUAL] LESS SLIPS AND GUIDES |                       |                  |          |             |
| 79772                                   | BELL GUIDE KIT                                       |                       |                  |          |             |
| 79462                                   | SPIDER ADAPTER PLATE                                 |                       |                  |          |             |
| 79881                                   | AIRLINE & FILTER ASSEMBLY                            |                       |                  |          |             |
| CASING SIZE                             | SLIP BODY SIZE                                       | ELEVATOR BOTTOM GUIDE | SPIDER TOP GUIDE | SLIP SET | INSERT SET  |
| 2 3/8"                                  | 3 1/2"   | 79751                 | 79525            | 79527-23 | 2160-12B-12 |
| 2 7/8"                                  | 3 1/2"   | 79871                 | 79864            | 79572-28 | 2161-12B-12 |
| 3 1/2"                                  | 3 1/2"   | 79870                 | 79863            | 79527-35 | 2162-24     |
| 3 1/2"                                  | 4 1/2"   | 79870                 | 79863            | 79901-35 | 2163-16B-16 |
| 4"                                      | 4 1/2"   | 79869                 | 79862            | 79901-40 | 2164-16B-16 |
| 4 1/2"                                  | 4 1/2"   | 79868                 | 79861            | 79901-45 | 2165-32     |
| 4 1/2"                                  | 5 1/2"   | 79868                 | 79861            | 79525-45 | 2168-16B-16 |
| 5"                                      | 5 1/2"   | 79867                 | 79860            | 79525-50 | 2169-16B-16 |
| 5 1/2"                                  | 5 1/2"   | 79867                 | 79860            | 79525-55 | 2170-32     |
| 6 5/8"                                  | 7 5/8"   | 79866                 | 79859            | 79524-66 | 2632-24B-24 |
| 7"                                      | 7 5/8"   | 79866                 | 79859            | 79524-70 | 2623-24B-24 |
| 7 5/8"                                  | 7 5/8"   | 79865                 | 79858            | 79524-76 | 2633-48     |



| 11776       | ELEVATOR / SPIDER [MANUAL] LESS SLIPS AND GUIDES |                       |                  |          |             |
|-------------|--|-----------------------|------------------|----------|-------------|
| 11798       | BELL GUIDE KIT                                   |                       |                  |          |             |
| 19276       | SPIDER ADAPTER PLATE                             |                       |                  |          |             |
| 11881       | AIRLINE & FILTER ASSEMBLY                        |                       |                  |          |             |
| CASING SIZE | SLIP BODY SIZE                                   | ELEVATOR BOTTOM GUIDE | SPIDER TOP GUIDE | SLIP SET | INSERT SET  |
| 4 1/2"      | 5 1/2"   | 11787                 | 18419-1          | 11865    | 2168-16B-24 |
| 5"          | 5 1/2"   | 11788                 | 18419-2          | 11864    | 2169-16B-24 |
| 5 1/2"      | 5 1/2"   | 11789                 | 18419-3          | 11863    | 2170-40     |
| 6 5/8"      | 7 5/8"   | 11791                 | 18419-4          | 11861    | 2632-24B-36 |
| 7"          | 7 5/8"   | 11791                 | 18419-4          | 11860    | 2623-24B-36 |
| 7 5/8"      | 7 5/8"   | 11792                 | 18419-5          | 11859    | 2633-60     |
| 7 3/4"      | 7 5/8"   | 11792                 | 18419-5          | 71592-1  | 2649-60     |
| 8 5/8"      | 9 5/8"   | 11793                 | 18419-6          | 11857    | 2640-32B-48 |
| 8 3/4"      | 9 5/8"   | 11793                 | 18419-6          | 71591-3  | 2650-32B-48 |
| 9 5/8"      | 9 5/8"   | 11794                 | 18419-7          | 11856    | 2633-80     |
| 9 3/4"      | 9 5/8"   | 71231                 | 18419-15         | 71591-2  | 2649-80     |
| 9 7/8"      | 9 5/8"   | 71231                 | 18419-15         | 71591-1  | 2649-80     |
| 10 3/4"     | 11 3/4"  | 11795                 | 18419-8          | 11854    | 2640-40B-60 |
| 107/8"      | 11 3/4"  | 11795                 | 18419-8          | 71590-1  | 2650-40B-60 |
| 11 3/4"     | 11 3/4"  | 11796                 | 18419-9          | 11853    | 2637-100    |
| 11 7/8"     | 11 3/4"  | 11796                 | 18419-9          | 71590-2  | 2651-100    |
| 12 3/4"     | 14"  | 11797-1               | 18419-13         | 70732-6  | 2657-40B-60 |
| 13 3/8"     | 14"  | 11797                 | 18419-10         | 70732-5  | 2636-40B-60 |
| 13 1/2"     | 14"  | 71228                 | 18419-12         | 70732-4  | 2652-40B-60 |
| 13 5/8"     | 14"  | 71228                 | 18419-12         | 70732-3  | 2653-40B-60 |
| 13 3/4"     | 14"  | 71228                 | 18419-12         | 70732-2  | 2655-40B-60 |
| 14"         | 14"  | 15939                 | 18419-11         | 70732-1  | 2635-100    |



SALES@BVMCORP.COM  
 877-975-1402  
 303-975-1402  
 FAX - 303-975-0981  
 INTL - (01)303-975-1402  
 WWW.BVMCORP.COM

# CASING SPIDER - ELEVATOR

## 500 TON CAPACITY 4 1/2" TO 14"

| 13800       | ELEVATOR / SPIDER [MANUAL] LESS SLIPS AND GUIDES |                       |                  |          |             |
|-------------|--|-----------------------|------------------|----------|-------------|
| 11798       | BELL GUIDE KIT                                   |                       |                  |          |             |
| 19276       | SPIDER ADAPTER PLATE                             |                       |                  |          |             |
| 11881       | AIRLINE & FILTER ASSEMBLY                        |                       |                  |          |             |
| CASING SIZE | SLIP BODY SIZE                                   | ELEVATOR BOTTOM GUIDE | SPIDER TOP GUIDE | SLIP SET | INSERT SET  |
| 4 1/2"      | 5 1/2"   | 11787                 | 18419-1          | 13842-1  | 2168-16B-32 |
| 5"          | 5 1/2"   | 11788                 | 18419-2          | 13842-2  | 2169-16B-32 |
| 5 1/2"      | 5 1/2"   | 11789                 | 18419-3          | 13842-1  | 2170-48     |
| 6 5/8"      | 7 5/8"   | 11791                 | 18419-4          | 13841-3  | 2632-24B-48 |
| 7"          | 7 5/8"   | 11791                 | 18419-4          | 13841-2  | 2623-24B-48 |
| 7 5/8"      | 7 5/8"   | 11792                 | 18419-5          | 13841-1  | 2633-72     |
| 7 3/4"      | 7 5/8"   | 11792                 | 18419-5          | 13841-4  | 2649-72     |
| 8 5/8"      | 9 5/8"   | 11793                 | 18419-6          | 13840-3  | 2640-32B-64 |
| 8 3/4"      | 9 5/8"   | 11793                 | 18419-6          | 13840-5  | 2650-32B-64 |
| 9 5/8"      | 9 5/8"   | 11794                 | 18419-7          | 13840-1  | 2633-96     |
| 9 3/4"      | 9 5/8"   | 71231                 | 18419-15         | 13840-4  | 2649-96     |
| 9 7/8"      | 9 5/8"   | 71231                 | 18419-15         | 13840-2  | 2649-96     |
| 10 3/4"     | 11 3/4"  | 11795                 | 18419-8          | 13839-3  | 2640-40B-80 |
| 107/8"      | 11 3/4"  | 11795                 | 18419-8          | 13839-4  | 2650-40B-80 |
| 11 3/4"     | 11 3/4"  | 11796                 | 18419-9          | 13839-2  | 2637-120    |
| 11 7/8"     | 11 3/4"  | 11796                 | 18419-9          | 13839-1  | 2651-120    |
| 12 3/4"     | 14"  | 11797-1               | 18419-13         | 70794-7  | 2657-40B-80 |
| 13 3/8"     | 14"  | 11797                 | 18419-10         | 70734-5  | 2636-40B-80 |
| 13 1/2"     | 14"  | 71228                 | 18419-12         | 70734-4  | 2652-40B-80 |
| 13 5/8"     | 14"  | 71228                 | 18419-12         | 70734-3  | 2653-40B-80 |
| 13 3/4"     | 14"  | 71228                 | 18419-12         | 70734-2  | 2655-40B-80 |
| 14"         | 14"  | 15939                 | 18419-11         | 70734-1  | 2635-120    |

## 500 TON CAPACITY 16" TO 24 1/2"

| 15740-1     | ELEVATOR / SPIDER [MANUAL] LESS SLIPS AND GUIDES |                       |                  |          |            |
|-------------|--|-----------------------|------------------|----------|------------|
| 19001       | BELL GUIDE KIT                                   |                       |                  |          |            |
| 16552       | SPIDER ADAPTER PLATE                             |                       |                  |          |            |
| 11881       | AIRLINE & FILTER ASSEMBLY                        |                       |                  |          |            |
| CASING SIZE | SLIP BODY SIZE                                   | ELEVATOR BOTTOM GUIDE | SPIDER TOP GUIDE | SLIP SET | INSERT SET |
| 16"         | 16"  | 16184                 | 73138            | 15790-4  | 2635-180   |
| 18 5/8"     | 18 5/8"  | 15794                 | 73137            | 15790-3  | 2668-180   |
| 20"         | 20"  | 15793                 | 73136            | 15790-2  | 2635-180   |
| 24"         | 24"  | 15792                 | 73135            | 15790-1  | 2635-180   |



## 750 TON CAPACITY 4 1/2" TO 14"

| 63000       | ELEVATOR / SPIDER [MANUAL] LESS SLIPS AND GUIDES |                       |                  |          |              |
|-------------|--|-----------------------|------------------|----------|--------------|
| 19002       | BELL GUIDE KIT                                   |                       |                  |          |              |
| 17163       | SPIDER ADAPTER PLATE                             |                       |                  |          |              |
| 11881       | AIRLINE & FILTER ASSEMBLY                        |                       |                  |          |              |
| CASING SIZE | SLIP BODY SIZE                                   | ELEVATOR BOTTOM GUIDE | SPIDER TOP GUIDE | SLIP SET | INSERT SET   |
| 6 5/8"      | 7 5/8"   | 11791                 | 18419-4          | 16182-4  | 2632-24B-60  |
| 7"          | 7 5/8"   | 11791                 | 18419-4          | 16182-8  | 2623-24B-60  |
| 7 5/8"      | 7 5/8"   | 11792                 | 18419-5          | 16182-7  | 2633-84      |
| 7 3/4"      | 7 5/8"   | 11792                 | 18419-5          | 16182-21 | 2649-84      |
| 8 5/8"      | 9 5/8"   | 11793                 | 18419-6          | 16182-6  | 2640-32B-80  |
| 8 3/4"      | 9 5/8"   | 11793                 | 18419-6          | 16182-20 | 2650-32B-80  |
| 9 5/8"      | 9 5/8"   | 11794                 | 18419-7          | 16182-3  | 2633-112     |
| 9 3/4"      | 9 5/8"   | 71231                 | 18419-15         | 16182-19 | 2649-112     |
| 9 7/8"      | 9 5/8"   | 71231                 | 18419-15         | 16182-18 | 2649-112     |
| 10 3/4"     | 11 3/4"  | 11795                 | 18419-8          | 16182-5  | 2640-40B-100 |
| 107/8"      | 11 3/4"  | 11795                 | 18419-8          | 16182-17 | 2650-40B-100 |
| 11 3/4"     | 11 3/4"  | 11795                 | 18419-9          | 16182-2  | 2637-140     |
| 11 7/8"     | 11 3/4"  | 11796                 | 18419-9          | 16182-16 | 2651-140     |
| 13 3/8"     | 14"  | 11791                 | 18419-10         | 16182-10 | 2636-40B-100 |
| 13 1/2"     | 14"  | 71228                 | 18419-12         | 16182-12 | 2652-40B-100 |
| 13 5/8"     | 14"  | 71228                 | 18419-12         | 16182-15 | 2653-40B-100 |
| 13 3/4"     | 14"  | 71228                 | 18419-12         | 70732-2  | 2655-40B-100 |
| 14"         | 14"  | 15939                 | 18419-11         | 16182-9  | 2635-140     |

## 750 TON CAPACITY 16" TO 24 1/2"

| 16180       | ELEVATOR / SPIDER [MANUAL] LESS SLIPS AND GUIDES |                       |                  |          |            |
|-------------|--|-----------------------|------------------|----------|------------|
| 19001       | BELL GUIDE KIT                                   |                       |                  |          |            |
| 16552       | SPIDER ADAPTER PLATE                             |                       |                  |          |            |
| 11881       | AIRLINE & FILTER ASSEMBLY                        |                       |                  |          |            |
| CASING SIZE | SLIP BODY SIZE                                   | ELEVATOR BOTTOM GUIDE | SPIDER TOP GUIDE | SLIP SET | INSERT SET |
| 16"         | 16"  | 16184                 | 73138            | 16181    | 2635-210   |
| 18 5/8"     | 18 5/8"  | 15794                 | 73137            | 16179    | 2668-210   |
| 20"         | 20"  | 15793                 | 73136            | 16178    | 2635-210   |
| 24"         | 24"  | 15792                 | 73135            | 16900    | 2635-210   |



SALES@BVMCORN.COM  
 877-975-1402  
 303-975-1402  
 FAX - 303-975-0981  
 INTL - (01)303-975-1402  
 WWW.BVMCORN.COM

# TUBING AND CASING SPIDERS POWER UNITS - KELLY SPINNERS

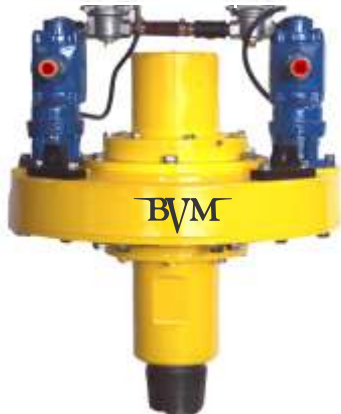


## TUBING SPIDER PNEUMATIC / MANUAL

| PART #  | TYPE         | SIZE (INCH)   | WEIGHT | TONNAGE |
|---------|--------------|---------------|--------|---------|
| 86500   | C            | 1.315 - 5 1/2 | 348    | 83      |
| 16500HD | C HEAVY DUTY | 1.315 - 5 1/2 | 348    | 125     |

## ACCESSORIES

|              |                             |               |  |          |
|--------------|-----------------------------|---------------|--|----------|
| 565622-100   | SLIP BODY 3 1/2             | 1.315 - 3 1/2 |  | 83 & 125 |
| 565652-1.315 | INSERT SET                  | 1.315         |  | 83 & 125 |
| 565652-1.660 | INSERT SET                  | 1.660         |  | 83 & 125 |
| 565652-1.900 | INSERT SET                  | 1.900         |  | 83 & 125 |
| 565652-2.060 | INSERT SET                  | 2.060         |  | 83 & 125 |
| 565652-1     | INSERT SET                  | 2 3/8         |  | 83 & 125 |
| 565652-2 7/8 | INSERT SET                  | 2 7/8         |  | 83 & 125 |
| 565652-3 1/2 | INSERT SET                  | 3 1/2         |  | 83 & 125 |
| 865623-100   | SLIP BODY 4 1/2             | 3 1/2 - 5 1/2 |  | 83 & 125 |
| 865653-1     | INSERT SET                  | 3 1/2         |  | 83 & 125 |
| 865653-2     | INSERT SET                  | 4             |  | 83 & 125 |
| 865653-3     | INSERT SET                  | 4 1/2         |  | 83 & 125 |
| 865624-4     | SLIP BODY 4 3/4             | 4.75          |  | 83 & 125 |
| 865624-1     | SLIP BODY 5                 | 5             |  | 83 & 125 |
| 865624-2     | SLIP BODY 5 1/2             | 5.5           |  | 83 & 125 |
| 65300        | AIR HOSE SET                |               |  | 83 & 125 |
| 65200-100    | FOOT CONTROL VALVE W/ COVER |               |  | 84 & 125 |



## KELLY SPINNER PNEUMATIC / HYDRAULIC

| PART #   | THREAD CONN. (PIN & BOX)    | MAX TORQUE LB | MAX SPEED FREE SPIN RPM | UNIT WEIGH T | CRATED DIMENSIONS | POWER REQUIREMENT S FREE SPIN |
|----------|-----------------------------|---------------|-------------------------|--------------|-------------------|-------------------------------|
| 200201-1 | 6 5/8 API REGULAR LEFT HAND | 1800 FT LB    | 150 RPM                 | 1110         | 35" X 37" X 40"   | 5.5 CFS@ 90 - 120 PSI         |
| 200201H- | 6 5/8 API REGULAR LEFT HAND | 1800 FT LB    | 150 RPM                 | 1048         | 35" X 37" X 40"   |                               |



## HYDRAULIC POWER UNITS

DIESEL UNITS AVAILABLE WITH DEUTZ 4 - 5 - 6 CYLINDER ENGINES WITH OR WITHOUT TURBO

ELECTRIC POWERED UNITS AVAILABLE IN MULTIPLE HORSEPOWER, VOLT AGE AND PHASE REQUIREMENTS

BUILT TO SUIT - SKID MOUNTED OR TRAILER - WITH TOOL BASKET - TANDEM ENGINE AND PUMP



## HINGED CASING SPIDER - 200/250 TON - 3" TAPER

| PART #     | DESCRIPTION                  | WEIGHT |
|------------|------------------------------|--------|
| 7704-A-167 | 36" HINGED CASING SPIDER     | 1100   |
| 7704-A-161 | 30" HINGED CASING SPIDER     | 1868   |
| 7704-A-130 | 20" HINGED CASING SPIDER     | 1614   |
| 7704-A-79  | 13 3/8" HINGED CASING SPIDER | 950    |

## REDUCING BUSHINGS - 200 / 250 TON HINGED CASING SPIDER

|            |                                    |     |
|------------|------------------------------------|-----|
| 7704-A-165 | 30" X 16"                          | 980 |
| 7704-A-150 | 30" X 18 5/8"                      | 900 |
| 7704-A-164 | 30" X 20"                          | 850 |
| 7704-A-163 | 30" X 24"                          | 755 |
| 7704-A-162 | 30" X 26"                          | 605 |
| 7704-A-134 | 20" X 16"                          | 395 |
| 7704-A-136 | 20" X 13 3/8"                      | 480 |
| 7704-A-80  | 13 3/8" X 10 3/4"                  | 160 |
| 7704-A-81  | 13 3/8" X 8 5/8" - 4" TAPER INSIDE | 240 |

OTHER SIZES AVAILABLE



SALES@BVMCORP.COM  
877-975-1402  
303-975-1402  
FAX - 303-975-0981  
INTL - (01)303-975-1402  
WWW.BVMCORP.COM

# TERMS, CONDITIONS & WARRANTY

## PURCHASE ORDERS

All orders must be accompanied by a purchase order or our Sales Acknowledgement form signed and faxed back to us. We will not accept verbal orders without written confirmation.

## TERMS OF PAYMENT:

All payments are due as set forth on the front of this invoice. All late payments will be assessed a 2% per month finance fee and a \$50 [fifty] rebilling fee for each rebilling fee sent. If BVM must initiate action to collect unpaid money, BVM shall be awarded collection costs including but not limited to attorney's fees and costs. Buyer agrees to allow BVM or BVM's agent to enter the property of the Buyer where property is located and remove equipment if payments are not made as set forth in this invoice. Buyer agrees that BVM need not give notice or file an action to remove equipment if equipment is not paid as set forth herein.

## ACCEPTANCE OF GOODS:

The buyer's receipt of equipment for a period of ten [10] days without written objection, shall be conclusive evidence of acceptance of equipment by Buyer and shall be deemed and construed as conclusive evidence that such equipment is as herein represented and shall be deemed as conforming goods.

## JURISDICTION & ARBITRATION:

This agreement and the law regarding the interpretation and enforcement of this agreement shall be held in accordance to laws of the State of Colorado. Both parties to this agreement submit themselves to the jurisdiction of the State of Colorado.

If a dispute arises regarding this purchase, invoice or any related subject or item between BVM and Buyer, both parties agree to submit themselves to final and binding arbitration according to the laws and interpretations of the State of Colorado and the American Arbitration Association in Denver, Colorado.

## SEVERABILITY AND WAIVER:

The partial or complete invalidity of any one or more provisions of this agreement shall not affect the validity of continuing force and effect of any other provisions. The failure to either party hereto to insist, in any one or more instances, upon the performance of the terms, covenants or conditions of this agreement, or to exercise any right herein, shall not be construed as a waiver or relinquishment of such term, covenant, condition or right as with respect to further performance.

## RETURNS:

No materials purchased hereunder shall be returned without Return Materials Authorization Number [RMA] from our Quality Control Department. Standard restocking fee charge shall be 20% of the invoice price. All returns shall be freight prepaid unless otherwise approved. Equipment returned under warranty must be returned on a designated freight carrier of BVM.

## WARRANTY:

Equipment sold by BVM Corporation Inc. is warranted against manufacturer's defects for the period of 12 months from the first use or 18 months from original sale from BVM Corporation or their authorized reseller, whichever is less. If the equipment supplied fails to conform to specifications or is proven to be defective, BVM Corporation Inc. will issue a Return Material Authorization for goods to be returned for repair or replacement at our option, without cost to the original purchaser, or upon agreement of both parties, the repayment of the purchase price may be issued. This shall constitute Purchaser's sole and exclusive remedy. Purchaser will notify BVM Corporation in writing of any equipment which does not conform to specifications within 30 days of delivery or field failure. If purchaser fails to give proper notification the terms of this warranty may become null and void. Goods may be returned at the expense of BVM Corporation Inc. only when an authorized RMA has been issued by BVM Corporation Quality Assurance Dept. If faulty equipment is received by BVM and it is found that the equipment has malfunctioned due to lack of maintenance or excessive wear and tear, purchaser will be billed for all shipping costs and any repairs agreed upon between BVM quality dept. and purchaser. BVM Corporation Inc. shall have no liability whatsoever for incidental or consequent damages, resulting from personal injury, property damage or shutdown due to product modification or unauthorized repairs. Purchaser hereby agrees to indemnify BVM Corporation Inc. from all liability arising from the purchaser's improper use or operation of equipment manufactured or sold by BVM Corporation Inc.



SALES@BVMCORP.COM  
877-975-1402  
303-975-1402  
FAX - 303-975-0981  
INTL - (01)303-975-1402  
WWW.BVMCORP.COM

# PICK UP - LAYDOWN MACHINE

## **BVM PICKUP LAYDOWN (PULD)\***

**Model # BVM-LDM28 PU "Patent Pending" (Skip Type) – Designed for Work over rigs**  
**Length – 39 ft Width – 40 in Height (lowered) – 36"\***

**Lifting Capacity – Range 2 & 3 Pipe 2 3/8" Tubing to 7 5/8" Casing**

**Maximum Lifting capacity – 2500 lbs Ability to reach rig floor 6 to 27' 8"\***

**Boom extensions (Stinger) – 8 feet**

**30 foot Trough with 26 feet of Pipe Pusher Capacity**

**Wireless Remote control**

**\* Call or email for exact specs and optional configurations**

### **POWER UNIT\***

**4 cyl Duetz Diesel driven Hydraulic Power Unit**

**\* Call or email for exact specs and optional configurations**



**BVM**  
CORPORATION  
USA

SALES@BVMCORP.COM  
877-975-1402  
303-975-1402  
FAX - 303-975-0981  
INTL - (01)303-975-1402  
WWW.BVMCORP.COM

# NOTES



**BVM**  
CORPORATION  
USA

